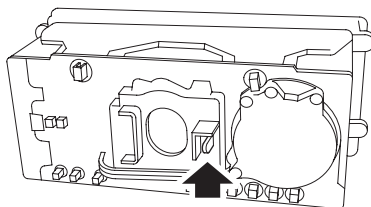
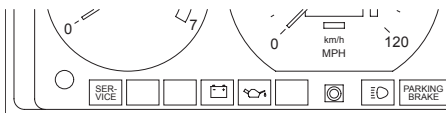


## Volvo

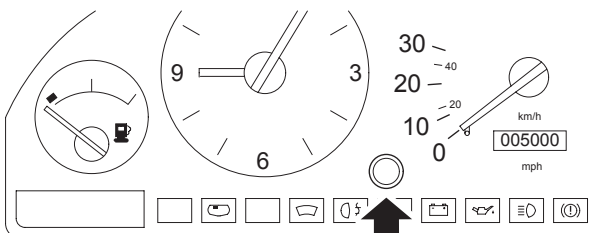
### Manual Service Reset Volvo 240 (1986 - 1989)



OM1032

Reach behind the instrument panel and push the lever located between the tachometer and the speedometer.

### Volvo 240 (1990 - 1993)



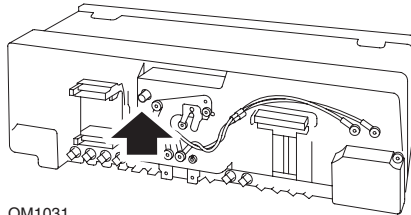
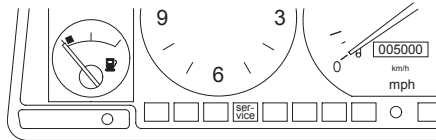
OM1033

1. Remove the plug from the face of the instrument panel between the clock and the speedometer.
2. Insert a thin-bladed tool into the cavity and press the reset button.

# Volvo

---

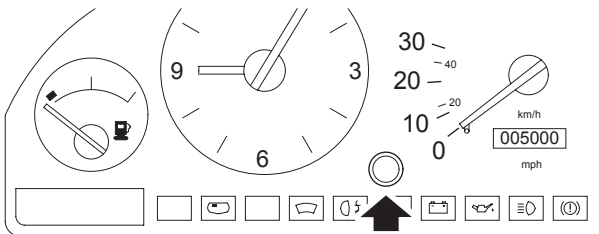
## Volvo 740 (1986 - 1988)



OM1031

Reach behind the instrument panel and push the button located to the left of the speedometer.

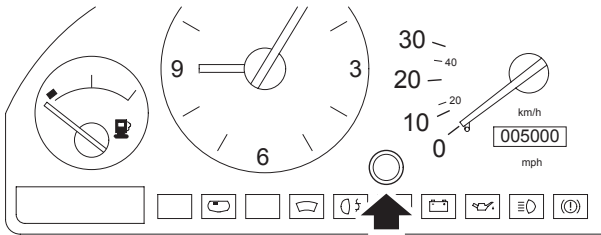
## Volvo 740 (1989 - 1992)



OM1033

1. Remove the plug from the face of the instrument panel between the clock and the speedometer.
2. Insert a thin-bladed tool into the cavity and press the reset button.

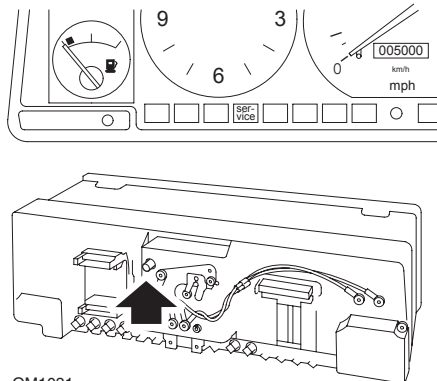
## Volvo 760 (1986 - 1990)



OM1033

1. Remove the plug from the face of the instrument panel between the clock and the speedometer.
2. Insert a thin-bladed tool into the cavity and press the reset button.

## Volvo 780 (1988 - 1990)



OM1031

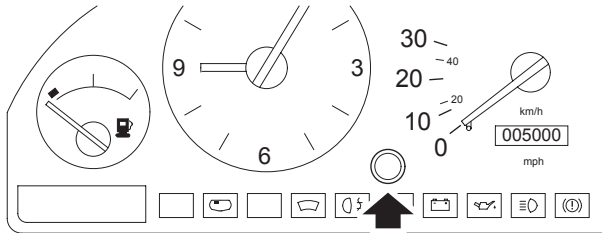
Reach behind the instrument panel and push the button located to the left of the speedometer.

# Volvo

---

## Volvo 850 (1993 - 1995) fitted with the Yazaki instrument panel

*NOTE: This instrument panel has the odometer located above the speedometer needle.*



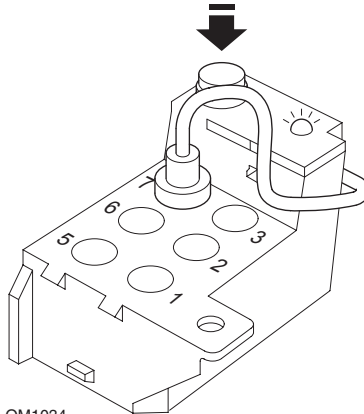
OM1033

1. Remove the plug from the face of the instrument panel between the clock and the speedometer.
2. Insert a thin-bladed tool into the cavity and press the reset button.

**Volvo 850 (1993 - 1995) fitted with the VDO instrument panel**

*NOTE: This instrument panel has the odometer located below the speedometer needle.*

1. With the ignition switch in the ON position and the engine not running.



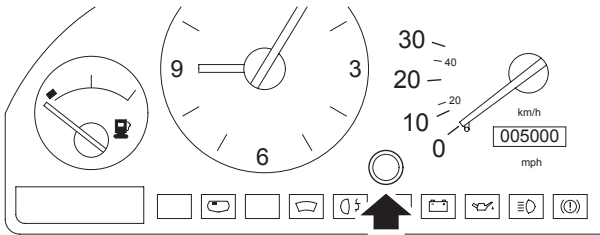
*Diagnostic module located in engine compartment adjacent to LH suspension mount*

2. Connect the diagnostic module test lead to terminal 7.
3. Press the reset button on the diagnostic module 4 times in quick succession.
4. When the LED on the diagnostic unit illuminates and stays illuminated, press the reset button once and release it.
5. When the LED illuminates and stays illuminated, press the button 5 times in quick succession.
6. When the LED illuminates again, press the button once.
7. The LED will flash several times to indicate that the sequence has been correctly entered and the SRI has been reset.
8. Unplug the test lead from terminal 7 and turn the ignition switch to the 'OFF' position.

# Volvo

---

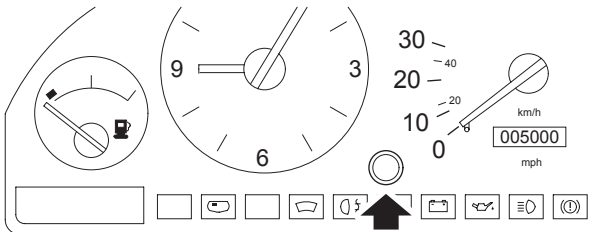
## Volvo 940 (1991 - 1995)



OM1033

1. Remove the plug from the face of the instrument panel between the clock and the speedometer.
2. Insert a thin-bladed tool into the cavity and press the reset button.

## Volvo 960 (1991 - 1995)



OM1033

1. Remove the plug from the face of the instrument panel between the clock and the speedometer.
2. Insert a thin-bladed tool into the cavity and press the reset button.