



VOLVO  
**XC70 PRICING**

**VOLVO**  
for life



# THE VOLVO XC70

Do you prefer on-road performance or off-road ability? Thankfully, with the XC70, Volvo has removed the need for this question. The XC70 is perfectly at home on any terrain – and with the help of this price list you can feel perfectly at home in your very own cross country vehicle.

## D5

The D5 2.4 litre, turbocharged, in-line, 5 cylinder, common rail diesel engine delivers very low fuel consumption and CO<sub>2</sub> emissions with excellent performance – producing 163 bhp and 340 Nm torque. This extremely advanced diesel engine is made entirely of aluminium giving it a similar weight to a petrol engine. This advanced design combined with second generation electronic common rail fuel injection and the variable blade turbocharger makes it one of the quietest and most advanced diesel engines available on the market.

CHOOSE YOUR VOLVO	2-3
STANDARD AND OPTIONAL EQUIPMENT	4-5
ACCESSORIES & UPHOLSTERY	6-7
TECHNICAL SPECIFICATION	8-9
CHOOSE YOUR COLOUR	10
CARE BY VOLVO	11

### XC70 SE

The comprehensive standard specification includes electronic climate control, 16" alloy wheels, 4 x CD radio with Dolby Surround Sound™<sup>(ii)</sup>, leather-faced upholstery and steering wheel plus all the safety features you would expect from Volvo.

	Basic £	VAT £	Rec Retail Price £	On The Road Price £	On The Road Price € <sup>(i)</sup> Euros
<b>PETROL</b>					
2.5T SE	£24,042.55	£4,207.45	£28,250.00	£28,910.00	€44,463.58
<b>DIESEL</b>					
D5 SE (Geartronic)	£23,800.00	£4,165.00	£27,965.00	£28,625.00	€44,025.25

### XC70 SE LUX

The SE Lux model offers RTI Navigation System with TV, Electric Driver and Passenger Seats, Headlamp Wash/Wipe and Heated Front Seats.

	Basic £	VAT £	Rec Retail Price £	On The Road Price £	On The Road Price € <sup>(i)</sup> Euros
<b>PETROL</b>					
2.5T SE Lux	£26,170.21	£4,579.79	£30,750.00	£31,410.00	€48,308.58
<b>DIESEL</b>					
D5 SE Lux (Geartronic)	£25,927.66	£4,537.34	£30,465.00	£31,125.00	€47,870.25



(i) Euro prices shown are for information only and are calculated using an exchange rate of 1.538 Euros to the £, as published in the Financial Times on 6th January 2003. Euro prices will be subject to the prevailing exchange rate at the time of purchase. These figures are for information purposes only.

(ii) Dolby and Pro Logic Surround Sound™ are trademarks of Dolby Laboratories Licensing Corporation.

	SE	SE LUX
<b>SAFETY &amp; SECURITY</b>		
Dual Stage Driver and Passenger Airbags	•	•
SIPS (Side Impact Protection System)	•	•
SIPS Airbags	•	•
IC (Inflatable Curtain)	•	•
WHIPS (Whiplash Protection System) (Front Seats)	•	•
ABS (Anti-lock Brakes) with EBD (Electronic Brake Distribution)	•	•
DSTC (Dynamic Stability and Traction Control) with Electronic Brake Assistance	•	•
5 Three Point Seat Belts	•	•
Seat Belt Pre-tensioners (Front and Rear)	•	•
Head Restraints – All 5 Seats	•	•
ISOFIX Child Seat Preparation	•	•
Anti-theft Alarm including Immobiliser and Panic Function	•	•
Key Integrated Remote Control Central Locking including Fuel Flap with Deadlocking System	•	•
Mass Movement Sensor	•	•
Tinted Windows	•	•
Load Cover (Cargo Area) with Load Protection Net (Steel) <sup>(vi)</sup>	•	•
Visible VIN Plate	•	•
Day Running Lights	•	•
Headlamp Levelling System	•	•
High Level LED Brake Light	•	•
Rear Lamp Side Marker Reflectors	•	•
Home Safe and Approach Lighting	•	•
<b>INTERIOR</b>		
ECC (Electronic Climate Control) with AQS (Air Quality System) and Pollen Filter	•	•
B Pillar Ventilation	•	•
Exterior Temperature Gauge	•	•
Information Centre	•	•
Cruise Control	•	•
Geartronic Transmission (D5 only)	•	•
Front and Rear Electric Windows	•	•
Electrically Adjustable and Heated Door Mirrors	•	•
Illuminated Driver and Passenger Vanity Mirrors	•	•
Front and Rear Reading Lamps	•	•
Autodimming Rear View Mirror	•	•
Cupholder in Dashboard <sup>(iii)</sup> , Two Cupholders in Tunnel Console <sup>(iv)</sup>	•	•
Grocery Bag Holder (Luggage Area) <sup>(ii)</sup>	•	•
12v Socket (Luggage Area)	•	•
Rear Waste Bin	•	•
Electric Driver's Seat (with Memory) and Door Mirror Memory	•	•
Electric Driver and Passenger Seats (with Driver's Memory) and Door Mirror Memory	•	•
Height Adjustable Driver and Passenger Seats	•	•
Forward Folding Front Passenger Seat	•	•
Versatile Split-folding Rear Seat (40%/20%/40%)	•	•
Two Position Rear Seat Backrest (for Flexible Load Carrying)	•	•
Heated Front Seats	•	•
Front Centre Armrest with Grab Handle	•	•
Leather Steering Wheel (Colour Co-Ordinated), Gear Knob and Handbrake Lever	•	•
Steering Wheel Remote Audio Controls	•	•
Height and Reach Adjustable Steering Column	•	•
Illuminated Ignition Lock	•	•
Walnut Wood Effect Trim	•	•
Leather-faced Upholstery	•	•
Textile Floor Mats	•	•
HU-803 RDS 4 x CD Radio with Dolby Pro Logic Surround Sound <sup>TM(vi)</sup> with 4 x 50W Amplifier and 9 Speakers	•	•
RTI Navigation System, Remote Control with Europe DVD and TV	•	•
Electronic Accessory Preparation	•	•
<b>EXTERIOR</b>		
16" Tellus Alloy Wheels – 215/65 R16 98H Tyres	•	•
Locking Wheels Nuts	•	•
Tempa Spare Wheel	•	•
Front Fog Lights	•	•
Headlamp Wash/Wipe	•	•
Rear Wash/Wipe with Interval Function	•	•
Rain Sensor – Automatic Windscreen Wiper Activation	•	•
Roof Rails	•	•
Comfort Chassis	•	•
Haldex AWD System	•	•
Load Compensating Suspension	•	•
Towbar preparation	•	•
Blue or Brown Bumpers with Wheel Arch Extensions	•	•
Grey Sill Cover with Stainless Steel Step Covers and Grey Side Mouldings	•	•
Mudflaps (Rear)	•	•

	Basic £	VAT £	Rec Retail Price £	Rec Retail Price € <sup>(i)</sup>	SE	SE LUX
<b>SAFETY &amp; SECURITY</b>						
Delete Passenger Airbag	–	–	–	–	nco	nco
Laminated Side Windows	£255.32	£44.68	£300.00	€461.40	o	o
Dark Tinted Rear Windows (Rear Windows and Rear Screen – includes Laminated Rear Door Windows) <sup>(ii)</sup>	£161.70	£28.30	£190.00	€292.22	o	o
Load Protection Net (One Piece)	–	–	–	–	nco	nco
Inclination Sensor	£106.38	£18.62	£125.00	€192.25	o	o
Power Child Locks (Rear Doors)	£63.83	£11.17	£75.00	€115.35	o	o
Integrated Booster Cushions x 2	£221.28	£38.72	£260.00	€399.88	o	o
<b>INTERIOR</b>						
Geartronic Transmission (std. D5)	£1,063.83	£186.17	£1,250.00	€1,922.50	o	o
Speed Dependent Steering System (not D5)	£191.49	£33.51	£225.00	€346.05	o	o
Electric Glass Tilt & Slide Sunroof	£595.74	£104.26	£700.00	€1,076.60	o	o
Front and Rear Ashtray, Cupholder and Front Cigarette Lighter <sup>(iv)</sup>	–	–	–	–	nco	nco
Foldable Table and Dual Cupholders – Rear <sup>(vii)</sup>	£63.83	£11.17	£75.00	€115.35	o	o
First Aid Kit	£21.28	£3.72	£25.00	€38.45	o	o
Electric Driver and Passenger Seats (with Driver's Memory) and Door Mirror Memory	£1,021.28	£178.72	£1,200.00	€1,845.60	u (£600)	•
Rear Facing Seats in Cargo Area <sup>(i, vi, vii, viii)</sup>	£553.19	£96.81	£650.00	€999.70	o	o
Heated Front Seats	£127.66	£22.34	£150.00	€230.70	o	•
3-Spoke Wood/Leather Steering Wheel	£204.26	£35.74	£240.00	€369.12	o	o
Black Mesh Trim	–	–	–	–	nco	nco
Mesh Aluminium Trim	–	–	–	–	nco	nco
HU-803 RDS Audio Max 4 x CD Radio with Dolby Pro Logic Surround Sound <sup>TM (v)</sup> , 4 x 75W Amplifier and 11 Speakers	£212.77	£37.23	£250.00	€384.50	o	o
Sub Woofer Under Load Floor Area <sup>(vi)</sup>	£127.66	£22.34	£150.00	€230.70	o	o
RTI Navigation System, Remote Control with Europe DVD Map, without TV	£1,872.34	£327.66	£2,200.00	€3,383.60	o	nco
RTI Navigation System, Remote Control with Europe DVD Map and TV	£2,297.87	£402.13	£2,700.00	€4,152.60	o	•
Dual Band Integrated GSM Telephone <sup>(iii)</sup>	£595.74	£104.26	£700.00	€1,076.60	o	o
Hands-free Phone System <sup>(iii)</sup>	£200.00	£35.00	£235.00	€361.43	o	o
Hands-free Phone System (inc Audio Mute Function) <sup>(iii)</sup>	£255.32	£44.68	£300.00	€461.40	o	o
<b>EXTERIOR</b>						
Black Paint (Solid)	£212.77	£37.23	£250.00	€384.50	o	o
Metallic/Pearlescent Paint	£425.53	£74.47	£500.00	€769.00	o	o
16" Xenia Alloy Wheels – 215/65 R16 98H Tyres	–	–	–	–	nco	nco
Headlamp Wash/Wipe	£127.66	£22.34	£150.00	€230.70	o	•
Bi-Xenon (Gas Discharge) Headlamps with Wash/Wipe	£553.19	£96.81	£650.00	€999.70	o	o
Towbar – Fixed Type with 7 Pin Electrics <sup>(viii)</sup>	£227.52	£39.82	£267.34	€411.17	o	o
Towbar – Fixed Type with 13 Pin Electrics <sup>(viii)</sup>	£281.93	£49.34	£331.27	€509.49	o	o
Towbar – Detachable Type with 7 Pin Electrics <sup>(viii)</sup>	£291.35	£50.99	£342.34	€526.52	o	o
Towbar – Detachable Type with 13 Pin Electrics <sup>(viii)</sup>	£345.76	£60.51	£406.27	€624.84	o	o
Towbar – Flange Type with 7 Pin Electrics <sup>(viii)</sup>	£244.54	£42.79	£287.33	€441.91	o	o
Towbar – Flange Type with 13 Pin Electrics <sup>(viii)</sup>	£295.54	£51.72	£347.26	€534.09	o	o
Park Assist, Rear <sup>(viii)</sup>	£316.03	£55.31	£371.34	€571.12	o	o
Park Assist, Rear with Audio Mute <sup>(viii)</sup>	£370.21	£64.79	£435.00	€669.03	o	o
Rear Spoiler <sup>(ix)</sup>	£212.77	£37.23	£250.00	€384.50	o	o
Cross Bars for Roof Rails	£97.87	£17.13	£115.00	€176.87	o	o
Skid Plate Protection (Front)	–	–	–	–	nco	nco
Engine Badge Deletion	–	–	–	–	nco	nco
Rain Sensor – Automatic Windscreen Wiper Activation	£123.40	£21.60	£145.00	€223.01	o	•



16" Tellus



16" Xenia

	Basic £	VAT £	Rec Retail Price £	Rec Retail Price € <sup>(i)</sup>	SE	SE LUX
<b>WINTER PACK</b>						
Heated Front Seats, Headlamp Wash/Wipe and Rain Sensor	£255.32	£44.68	£300.00	€461.40	o	•
<b>FAMILY PACK</b>						
Foldable Table and Dual Cupholders (Rear), Power Child Locks (Rear Doors) and Integrated Booster Cushions x 2	£255.32	£44.68	£300.00	€461.40	o	o
<b>CROSS COUNTRY PACK<sup>(viii)</sup></b>						
Roof Protection Ribs, Rear Skid Plate, Integrated Cool Box, Rear Spoiler and Rear Mudflaps	£557.45	£97.55	£655.00	€1,007.39	o	o

• = Standard o = Optional n/a = not available nco = no cost option i.e. a customer can upgrade to that option without paying any extra money  
 (i) Euro Prices shown are for information only and are calculated using an exchange rate of 1.538 Euros to the £ as published in the Financial Times on 6th January 2003. Euro prices will be subject to the prevailing exchange rate at the time of purchase. These figures are for information purposes only.  
 (ii) Grocery Bag Holder is removed when Rear Facing Seats in Cargo Area are ordered.  
 (iii) Cupholder in Dashboard is removed when Dual Band Integrated GSM Telephone is ordered.  
 (iv) Two Cupholders in Tunnel Console are removed when Front and Rear Ashtray, Cupholder in Tunnel Console and Front Cigarette Lighter are ordered.  
 (v) Dolby and Pro Logic Surround Sound<sup>TM</sup> are trademarks of Dolby Laboratories Licensing Corporation.  
 (vi) Indicates total fitted price. At participating dealers only. To find out who is a participating dealer contact the Volvo Helpline number on 0800 400 430.  
 (vii) Cannot be ordered in conjunction with one another.  
 (viii) This item will replace the Steel Load Protection Net with a Load Protection Net (One Piece) and changes the standard 40%/20%/40% split rear seat to 60%/40%.  
 (ix) Dark Tinted Windows and Rear Spoiler cannot be combined.

ACCESSORIES	Basic £	VAT £	Rec Retail Price £	Rec Retail Price € <sup>(i)</sup>
<b>EXTERIOR ACCESSORIES</b> (PRICES EXCLUDE FITTING UNLESS SHOWN OTHERWISE)				
Bike Rack (down tube clamp)	£51.06	£8.94	£60.00	€92.27
Bike Rack (servo lift)	£80.85	£14.15	£95.00	€146.11
Mud Flaps (rear)	£21.28	£3.72	£25.00	€38.46
Rear Spoiler <sup>(ii)</sup> (fitted price only available on a limited number of colours)	£254.47	£44.53	£299.00	€459.86
Roof protection ribs <sup>(iii)</sup>	£83.40	£14.60	£98.00	€150.72
Roofbox – Sport Time 50 (310 litre volume)	£187.23	£23.77	£220.00	€338.35
Roofbox – Weekender (370 litre volume)	£212.77	£37.23	£250.00	€384.51
Roofbox – Dynamic 65 (405 litre volume)	£229.79	£40.21	£270.00	€415.26
Roofbox – Sport Time 20 (405 litre volume)	£263.83	£46.17	£310.00	€476.78
Roofbox – Experience (450 litre volume)	£272.34	£47.66	£320.00	€492.16
Roofbox – Dynamic 85 (510 litre volume)	£297.87	£52.13	£350.00	€538.30
Ski/Snowboard Carrier with Slide Rail	£59.58	£10.42	£70.00	€107.66
Skidplate (rear)	£40.85	£7.15	£48.00	€73.82
Snow Chain – standard version (variety available)	£119.15	£20.85	£140.00	€215.32
<b>INTERIOR ACCESSORIES</b>				
Cooler/Hot Box (excludes price for power cable)	£68.09	£11.92	£80.00	€123.05
Fire Extinguisher (excludes installation kit)	£21.28	£3.72	£25.00	€38.46
First Aid Kit	£17.02	£2.98	£20.00	€30.76
Integrated Coolbox <sup>(iii)</sup>	£178.73	£31.28	£210.00	€322.99
Integrated Storage Bag <sup>(iii)</sup>	£59.58	£10.43	£70.00	€107.66
Load Liner – full cargo area	£55.32	£9.68	£65.00	€99.97
Load Securing Net (cargo area)	£59.58	£10.43	£70.00	€107.66
Net Pocket (cargo area)	£25.53	£4.47	£30.00	€46.14
Padded Neck Cushion	£17.02	£2.98	£20.00	€30.76
PC table for laptop computers	£59.58	£10.43	£70.00	€107.67
Rubber Floor Mats (set of four)	£63.83	£11.17	£75.00	€115.35
Steel Safety Grill (for behind second row seats)	£119.15	£20.85	£140.00	€215.32
Table & Seat Cushions	£110.64	£19.36	£130.00	€199.94
Table (rear centre armrest)	£17.02	£2.98	£20.00	€30.76
<b>CHILD ACCESSORIES</b>				
Child Booster Cushion	£29.79	£5.21	£35.00	€53.83
Child Booster Backrest (to go with above)	£29.79	£5.21	£35.00	€53.83

(i) Euro prices shown are for information only and are calculated using an exchange rate of 1.538 Euros to the £, as published in the Financial Times on 6th January 2003. Euro prices will be subject to the prevailing exchange rate at the time of purchase. These figures are for information purposes only.

(ii) Indicates total fitted price. At participating dealers only. To find out who is a participating dealer contact the Volvo Helpline Number on 0800 400 430.

(iii) Must have 40%/20%/40% split rear seats

For further information and a complete list of all Volvo Accessories, just take a look at the new Accessory website at [www.volvocars.co.uk/accessories](http://www.volvocars.co.uk/accessories)



UPHOLSTERY	Code	Upholstery Colour	Dash Board/ Door Panel Colour	Door Insert Colour	Headliner Colour
Leather-faced	B970	Off Black	Off Black	Off Black	Granite
	B980	Oak	Oak	Oak	Arena
	B984	Brown	Oak	Brown	Arena
	B951	Light Sand	Beige	Light Sand	Light Sand

## UPHOLSTERY



Leather-faced Oak (B980)



Leather-faced Off Black (B970)

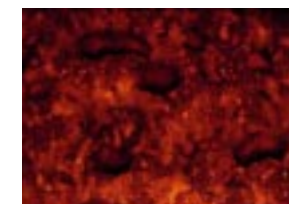


Leather-faced Light Sand (B951)



Leather-faced Brown (B984)

## INTERIOR INLAYS



Walnut Wood Effect



Mesh Aluminium



Black Mesh



NB It is not possible to reproduce exact original shades in printed matter. Please ask your Volvo dealer to show you samples.

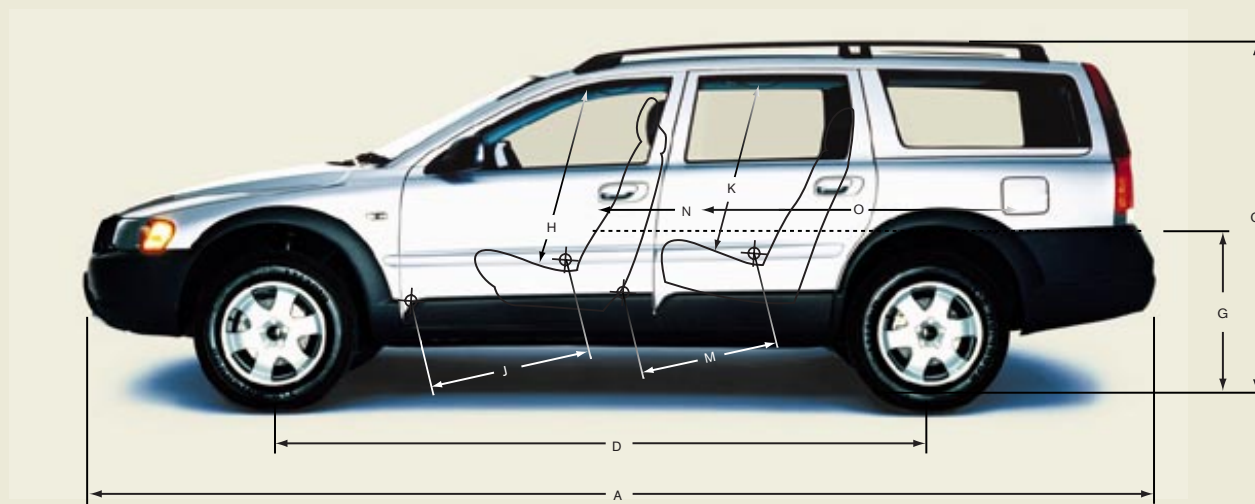
ENGINE	2.5T	D5
Configuration	Transverse – 20 valve	Transverse – 20 valve
Cylinders	5	5
Engine capacity, cc	2521	2401
Bore x stroke, mm	83 x 93	81 x 93
Max. output ECE, bhp/kw/rpm	210/154/5000	163/120/4000
Max. torque ECE, Nm/rpm	320/1500-4500	340/1750-3000
Octane rating	95-98 <sup>(iii)</sup> RON unleaded	Turbo Diesel
Fuel system	Multipoint fuel injection	Multipoint fuel injection
Compression ratio	9.0:1	18.0:1

PERFORMANCE	2.5T Man	2.5T Geartronic	D5 Geartronic
Top speed, mph	130	130	121
Acceleration 0-62mph, sec	8.1	8.5	11.5

WEIGHTS	2.5T	D5
Min. kerb weight, kg (actual kerb weight dependent on spec.)	1630	1715
Max. possible towing weight braked, kg	1800	1800
Max. towing weight unbraked approx, kg <sup>(iv)</sup>	750	750
Max. total weight, kg	2210	2210
Max. roof load, kg	100	100
Max. payload, kg	580	495

TRANSMISSION	All models
Manual	5
Automatic	5

POWER STEERING SYSTEM	All models
(rack & pinion) Turning circle, m (ft) 195 – 225 section tyres	10.9 – 11.9 (35' 8" – 39' 0")



EXTERIOR (mm)	INTERIOR (mm)		
A Overall length	4733	H Front seat max. headroom <sup>(v)</sup>	997
B Overall width (exc. wing mirrors)	1860	I Front seats width	1427
C Unladen height	1562	J Front seat max. legroom	1082
D Wheelbase length	2763	K Rear seat max. headroom <sup>(v)</sup>	988
E Front track width	1611	L Rear seats width	1419
F Rear track width	1548	M Rear seat max. legroom	894
G Ground to boot base height	673	N Load length luggage 2 seat mode <sup>(vi)</sup>	1848
		O Load length luggage 5 seat mode <sup>(vi)</sup>	1077



FUEL CONSUMPTION <sup>(i)</sup>	2.5T Man	2.5T Geartronic	D5 Geartronic
(Government Approved) Mpg (l/100 km) <sup>(ii)</sup>			
Urban	20.5 (13.8)	18.2 (15.5)	24.8 (11.4)
Extra Urban	33.6 (8.4)	31.7 (8.9)	41.5 (6.8)
Combined	27.2 (10.4)	25.0 (11.3)	33.2 (8.5)
CO <sub>2</sub> g/km	249	270	226
VED (Vehicle Excise Duty) Band	D	D	D

BRAKES	All models
Disc diameter mm, front	16" – 305
Disc diameter mm, rear	16" – 288

LUGGAGE COMPARTMENT TO GLASS LINE	XC70 to Glass Line	XC70 to Roof
Volume, litres (cu. ft.)	485 (17.1)	
Volume, rear seats down, litres (cu. ft.)	745 (26.3)	1641 (58.0)

GROUND CLEARANCE	All models
Vehicle ground clearance (mm)	209
with 2 persons (mm)	193

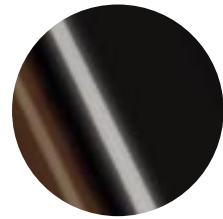
PERFORMANCE	All models
Drag Co-Efficient	0.34

FUEL TANK	All models
Volume, litres (gallons)	68 (15.0)

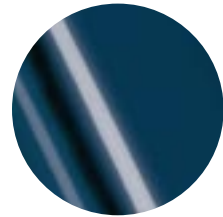
INSURANCE GROUPS	2.5T	D5
Volvo XC70	15	13

(i) These results do not express or imply any guarantee of the fuel consumption of a particular car as there are inevitable differences between individual cars of the same model. Additionally driving style, traffic conditions, as well as the age and mileage and standard of maintenance will affect a car's fuel consumption.  
(ii) The Urban fuel consumption figure is based on typical city driving, including starting the car from cold. The Extra Urban figure is based on typical motorway driving and cruising. The Combined figure averages the consumption across both cycles.  
(iii) For best performance and lowest fuel consumption 98 RON is recommended. 95 RON can be used for normal driving.  
(iv) Unbraked towing weight must not exceed 50% of kerb weight up to a maximum of 750 kg.  
(v) Figure quoted without sunroof.  
(vi) Measurement taken at height of floor covering.

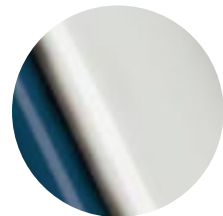
**Notes**  
All weights for any specific vehicle will vary according to standard and optional equipment fitted. A weighbridge must be used to determine specific weights.  
Data valid for manual transmission unless specified.  
All measurements in mm.  
NB Some of the information in this price list may not be correct due to product changes which may have occurred since it was printed. Some of the equipment described or shown may now be available at extra cost. Before ordering, please ask your Volvo dealer for the latest information. The manufacturer reserves the right to make changes at any time, without notice, to price, colour, materials, specifications and models.  
Volvo Car UK Limited, Globe Park, Marlow, Buckinghamshire, SL7 1YQ



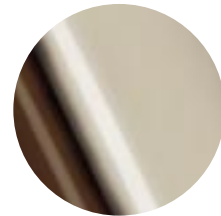
**019**  
Black Stone



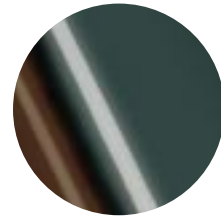
**417**  
Nautic Blue pearl



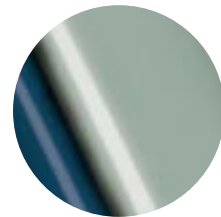
**426**  
Silver metallic



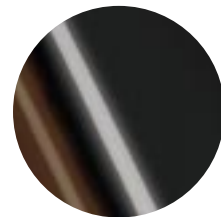
**446**  
Ash Gold pearl



**447**  
Scarab Green pearl



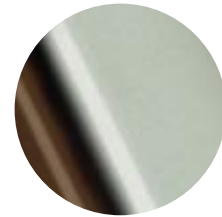
**449**  
Mistral Green metallic



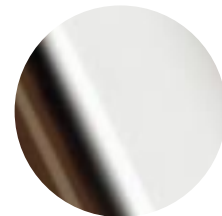
**452**  
Black Sapphire metallic



**454**  
Ruby Red pearl



**456**  
Crystal Green pearl



**614**  
Ice White

The bumpers and wheel arch extensions are in blue or brown, depending on your choice of exterior colour – please see your dealer for details.



NB It is not possible to reproduce exact original shades in printed matter. Please ask your Volvo dealer to show you samples.



Care by Volvo is a range of tailored benefits, facilities and services to make sure you get the maximum enjoyment from your Volvo.

## FINANCE

CARE BY VOLVO

We make finance simple, clear and attractive. For private motorists, our flexible purchase schemes like Volvo Advantage make ownership affordable, with low monthly payments and low minimum deposit<sup>(i)</sup>. For business users, Volvo purchase plans, leasing and contract hire facilities offer tax efficient, versatile finance alternatives.

## ASSISTANCE

CARE BY VOLVO

Every new car comes with one year's free RAC cover. You'll enjoy full breakdown and recovery assistance, anywhere in Europe, 24 hours a day. You can even extend cover for up to two more years at preferential rates.

## OWNERS INSURANCE

CARE BY VOLVO

Statistics show Volvo drivers have fewer accidents. That means Volvo Owners insurance can offer competitive premiums with tailored protection and exclusive benefits. Operated in conjunction with The Royal and SunAlliance, one telephone call even deals with all arrangements for any claim.

## WARRANTY

CARE BY VOLVO

Every new Volvo comes with comprehensive protection. Our warranty covers the first three years or 60,000 miles, whichever comes first. There's a three year unlimited warranty on the paintwork, and a full 8 years against rust perforation. If a component fails due to a defect or material fault, your dealer will swiftly rectify the problem, free of charge.

All 'On The Road' prices quoted in this price list include Volvo standard national delivery charge, inclusive of number plates, at £480 and the VED (Vehicle Excise Duty) car tax effective from 1st March 2000. The 'On The Road' price also includes a £25 vehicle first registration fee (as set by the government), effective since 1st April 1998 (excludes Channel Islands and Isle of Man). Retail prices quoted do not include these additions.

### Details

The above is just an outline of the facilities available to Volvo Owners. For full details, contact your dealer, or visit [www.volvocars.co.uk](http://www.volvocars.co.uk).

<sup>(i)</sup> Subject to status. Written quotations are available from Volvo Car Finance Limited, Globe Park, Marlow, Buckinghamshire SL7 1YQ.

**VOLVO**

Volvo Car UK Limited  
[www.volvocars.co.uk](http://www.volvocars.co.uk)