



VOLVO
V70 PRICING

VOLVO
for life



THE VOLVO V70

The Volvo V70 simply defies categorisation. It drives like a class-leading saloon – with some of the most impressive engines in its class. It feels like a luxury saloon, yet people still insist it's the best large estate on the market. Don't worry if you can't decide either – this price list should help you find the V70 that's exactly right for you.

T5

The T5 2.4 litre, turbocharged, in-line, 5 cylinder engine delivers outstanding performance – producing 260 bhp and 350 Nm torque. This powerful engine features variable valve timing on the exhaust side and a responsive turbocharger designed to deliver maximum torque across most engine speeds. The high charge air pressure in the turbo means extra power at high revs – this is an engine to inspire active driving.

D5

The D5 2.4 litre, turbocharged, in-line, 5 cylinder, common rail diesel engine delivers very low fuel consumption and CO₂ emissions with excellent performance – producing 163 bhp and 340 Nm torque. This extremely advanced diesel engine is made entirely of aluminium giving it a similar weight to a petrol engine. This advanced design combined with second generation electronic common rail fuel injection and the variable blade turbocharger makes it one of the quietest and most advanced diesel engines available on the market.

BI-FUEL

As part of Volvo's total commitment to the environment, the V70 Bi-Fuel engines enable you to benefit from the lower cost of LPG/CNG and reduce harmful emissions to the atmosphere.

CHOOSE YOUR VOLVO 2-3

STANDARD EQUIPMENT & OPTIONS 4-5

ACCESSORIES & UPHOLSTERY 6-7

TECHNICAL SPECIFICATION 8-9

CHOOSE YOUR COLOUR 10

CARE AND ATTENTION 11

V70 S

The comprehensive standard specification includes electronic climate control, 16" Mimas alloy wheels, front fog lights, CD player with 6 speakers, DSTC (Dynamic Stability and Traction Control), information centre, cruise control plus all the safety features you would expect from Volvo.

PETROL

2.4 (140 bhp) S	£18,382.98	£3,217.02	£21,600.00	£22,278.00	£33,327.89
2.4 (170 bhp) S	£19,574.47	£3,425.53	£23,000.00	£23,678.00	£35,422.29
2.0T S	£19,885.11	£3,479.89	£23,365.00	£24,043.00	£35,968.33
2.5T S	£21,446.81	£3,753.19	£25,200.00	£25,878.00	£38,713.49
2.5T AWD S	£22,412.77	£3,922.23	£26,335.00	£27,013.00	£40,411.45

DIESEL

D5 S	£19,885.11	£3,479.89	£23,365.00	£24,038.00	£35,960.85
D5 AWD S	£20,851.06	£3,648.94	£24,500.00	£25,183.00	£37,673.77

BI-FUEL

2.4 Bi-Fuel (LPG ⁽ⁱⁱ⁾) S	£20,297.87	£3,552.13	£23,850.00	£24,523.00	£36,686.41
2.4 Bi-Fuel (CNG ⁽ⁱⁱⁱ⁾) S	£20,978.72	£3,671.28	£24,650.00	£25,303.00	£37,853.29

V70 SPORT

The Sport model includes a host of features designed to give a sporting edge to the V70, both internally and externally. This includes unique 17" Orpheus alloy wheels, colour co-ordinated front and rear lower spoilers and lower side mouldings and a rear spoiler. Internally sports leather textile seats and aluminium trim create a sporty driver environment.

PETROL

2.4(140 bhp) Sport	£19,957.45	£3,492.55	£23,450.00	£24,128.00	£36,095.49
2.4(170 bhp) Sport	£21,148.94	£3,701.06	£24,850.00	£25,528.00	£38,189.89
2.0T Sport	£21,459.57	£3,755.43	£25,215.00	£25,893.00	£38,735.93
2.5T Sport	£23,021.28	£4,028.72	£27,050.00	£27,728.00	£41,481.09
2.5T AWD Sport	£23,987.23	£4,197.77	£28,185.00	£28,863.00	£43,179.05
T5 Sport	£24,638.30	£4,311.70	£28,950.00	£29,628.00	£44,323.49

DIESEL

D5 Sport	£21,459.57	£3,755.43	£25,215.00	£25,888.00	£38,728.45
D5 AWD Sport	£22,425.53	£3,924.47	£26,350.00	£27,033.00	£40,441.37

V70 SE

The SE model offers electric driver's seat, sports Leather-faced upholstery, 17" Orestes alloy wheels, chrome trim in front and rear bumpers, 6 x CD player with Dolby Pro Logic II Surround Sound^{TM(iv)} and 9 speakers.

PETROL

2.4 (140 bhp) SE	£20,510.64	£3,589.36	£24,100.00	£24,778.00	£37,067.89
2.4 (170 bhp) SE	£21,702.13	£3,797.87	£25,500.00	£26,178.00	£39,162.29
2.0T SE	£22,012.77	£3,852.23	£25,865.00	£26,543.00	£39,708.33
2.5T SE	£23,574.47	£4,125.53	£27,700.00	£28,378.00	£42,453.49
2.5T AWD SE	£24,540.43	£4,294.57	£28,835.00	£29,513.00	£44,151.45
T5 SE	£25,191.49	£4,408.51	£29,600.00	£30,278.00	£45,295.89

DIESEL

D5 SE	£22,012.77	£3,852.23	£25,865.00	£26,538.00	£39,700.85
D5 AWD SE	£22,978.72	£4,021.28	£27,000.00	£27,683.00	£41,413.77

BI-FUEL

2.4 Bi-Fuel (LPG ⁽ⁱⁱ⁾) SE	£22,425.53	£3,924.47	£26,350.00	£27,023.00	£40,426.41
2.4 Bi-Fuel (CNG ⁽ⁱⁱⁱ⁾) SE	£23,106.38	£4,043.62	£27,150.00	£27,803.00	£41,593.29



(i) Euro prices shown are calculated using an exchange rate of 1.496 Euros to the £, as published in the Financial Times on 31st March 2004. Euro prices will be subject to the prevailing exchange rate at the time of purchase. These figures are for information purposes only.

(ii) Liquefied Petroleum Gas.

(iii) Compressed Natural Gas.

(iv) Dolby and Pro Logic II Surround SoundTM are trademarks of Dolby Laboratories Licensing Corporation.

	S	SPORT	SE
SAFETY & SECURITY			
Dual Stage Driver and Passenger Airbags	•	•	•
SIPS (Side Impact Protection System)	•	•	•
SIPS Airbags	•	•	•
IC (Inflatable Curtain)	•	•	•
WHIPS (Whiplash Protection System) (Front Seats)	•	•	•
ABS (Anti-lock Brakes) with EBD (Electronic Brake Distribution)	•	•	•
DSTC (Dynamic Stability and Traction Control) with Electronic Brake Assistance	•	•	•
TRACS (Traction Control) (2.5T AWD only)	•	•	•
5 Three Point Seat Belts	•	•	•
Seat Belt Pre-tensioners (Front and Rear)	•	•	•
Head Restraints – All 5 Seats	•	•	•
Anti-theft Alarm including Immobiliser with LED key (Key Transponder) and Panic Function	•	•	•
Key Integrated Remote Control Central Locking including Fuel Flap with Deadlocking System	•	•	•
Mass Movement Sensor	•	•	•
Water Repellent Door Mirror Glass	•	•	•
Tinted Windows	•	•	•
Load Cover (Cargo Area) with Load Protection Net (60%/40%)(vi)	•	•	•
Visible VIN Plate	•	•	•
Day Running Lights	•	•	•
Headlamp Levelling System	•	•	•
High Level LED Brake Light	•	•	•
Front Side Marker Illumination/Rear Side Marker Illumination	•	•	•
Home Safe and Approach Lighting	•	•	•
INTERIOR	S	SPORT	SE
ECC (Electronic Climate Control) with AQS (Air Quality System) and Pollen Filter	•	•	•
B Pillar Ventilation	•	•	•
Exterior Temperature Gauge	•	•	•
Information Centre ⁽ⁱⁱ⁾	•	•	•
Cruise Control	•	•	•
Geartronic Transmission (D5 AWD only)	•	•	•
Front and Rear Electric Windows	•	•	•
Electrically Adjustable and Heated Door Mirrors	•	•	•
Electric Folding Door Mirrors with Ground Lights	•	•	•
Illuminated Driver and Passenger Vanity Mirrors	•	•	•
Front and Rear Reading Lamps	•	•	•
Autodimming Rear View Mirror	•	•	•
Cupholder in Dashboard ^(vi) , Two Cupholders in Tunnel Console ^(vi)	•	•	•
Grocery Bag Holder (Luggage Area) ^(vi)	•	•	•
12v Socket (Luggage Area and Rear Tunnel Console)	•	•	•
Rear Waste Bag/Bottle Holder	•	•	•
Electric Driver's Seat (with Memory) and Door Mirror Memory	•	•	•
Height Adjustable Driver and Passenger Seats	•	•	•
Forward Folding Front Passenger Seat	•	•	•
Asymmetric Split-folding Rear Seat (60%/40%)	•	•	•
Two Position Rear Seat Backrest (for Flexible Load Carrying)	•	•	•
Front Centre Armrest	•	•	•
Leather Steering Wheel, Gear Knob and Handbrake Lever	•	•	•
Steering Wheel Remote Audio Controls	•	•	•
Height and Reach Adjustable Steering Column	•	•	•
Illuminated Ignition Lock	•	•	•
Space Ball Gear Knob (TS SE Manual & Sport Only) ^(viii)	•	•	•
Manganite Trim	•	•	•
Mesh Aluminium Trim	•	•	•
Kilen Textile Upholstery	•	•	•
Vestborg Textile/Leather Sports Upholstery	•	•	•
Leather-faced Sports Upholstery	•	•	•
Performance Sound Audio System HU-650 RDS Single Slot CD Radio with 4 x 25W Amplifier and 6 Speakers	•	•	•
High Performance Sound Audio System HU-850 RDS 6 x CD Radio with Dolby Pro Logic II Surround Sound ^(viii) with 4 x 50W Amplifier and 9 Speakers	•	•	•
Electronic Accessory Preparation	•	•	•
EXTERIOR	S	SPORT	SE
16" Mimas Alloy Wheels – 205/55 R16 89W Tyres (2.4 (140/170 bhp), 2.0T, Bi-Fuel & D5 only)	•	•	•
17" Orpheus Alloy Wheels – 225/45 R17 91W Tyres	•	•	•
17" Orestes Alloy Wheels – 225/45 R17 91W Tyres	•	•	•
Locking Wheel Nuts	•	•	•
Tempa Spare Wheel (not Bi-Fuel)	•	•	•
Tyre Repair Kit – Tyre Sealant and 12V Compressor (Bi-Fuel only)	•	•	•
Front Fog Lights	•	•	•
Rear Spoiler	•	•	•
Rear Wash/Wipe with Interval Function	•	•	•
Rain Sensor – Automatic Windscreen Wiper Activation	•	•	•
Roof Rails	nco	nco	nco
Comfort Chassis	•	•	•
Lowered Sports Chassis (not AWD) with Load Compensating Suspension	•	•	•
Dynamic Chassis (T5 only)	•	•	•
Dynamic Chassis (2.5T AWD only)	•	•	•
Load Compensating Suspension (Bi-Fuel only)	•	•	•
Towbar preparation	•	•	•
Colour Co-ordinated Bumpers and Door Mirrors	•	•	•
Rear Bumper Protective Strip	•	•	•
Colour Co-ordinated Front and Rear Lower Spoilers and Lower Side Mouldings	•	•	•
Chrome Trim in Front and Rear Bumper Mouldings	•	•	•

- = Standard, o = option, n/a = not available, nco = no cost option, u (£) = upgrade.
- (i) Euro prices shown are calculated using an exchange rate of 1.496 Euros to the £ as published in the Financial Times on 31st March 2004. Euro prices will be subject to the prevailing exchange rate at time of purchase. These figures are for information purposes only.
- (ii) Functionality on Bi-Fuel; electronic petrol fuel gauge only.
- (iii) Grocery Bag Holder is removed when Rear Facing Seats in Cargo Area are ordered.
- (iv) Cupholder in Dashboard is removed when Dual Band Integrated GSM Telephone is ordered.
- (v) Two Cupholders in Tunnel Console are removed when Front and Rear Ashtray, Cupholder in Tunnel Console and Front Cigarette Lighter are ordered.
- (vi) Dolby and Pro Logic II Surround Sound^(vi) are trademarks of Dolby Laboratories Licensing Corporation.

- (vii) Rear Facing Seats in Cargo Area and Sub Woofer cannot be combined.
- (viii) Rear Facing Seats in Cargo Area cannot be combined with Alloy Spare Wheel or Large Steel Spare Wheel.
- (ix) Rear Facing Seats in Cargo Area cannot be ordered as a factory fit option with D5 AWD Geartronic. Available as an Accessory only.
- (x) Cannot be ordered in conjunction with Black Mesh Trim or Mesh Aluminium Trim.
- (xi) Load Cover not supplied when Rear Facing Seats in Cargo Area are ordered. Available separately as an Accessory. Please see your dealer for details.
- (xii) Volvo On Call includes: Start Up Fee, 1 year's Free Subscription, 1 x SOS Emergency Call, 1 x Breakdown Call and 25 Free Minutes.
- (xiii) Space Ball Gear Knob can only be combined with Mesh Aluminium or Black Mesh Trim.
- (xiv) Four-C Chassis cannot be combined with Load Compensating Suspension or Lowered Sport Chassis.

	Basic £	VAT £	Rec Retail Price £	Rec Retail Price € ⁽ⁱ⁾	S	SPORT	SE
SAFETY & SECURITY							
Passenger Airbag Cut Off Switch	£21.28	£3.72	£25.00	€37.40	o	o	o
Water Repellent Laminated Side Windows	£331.91	£58.09	£390.00	€583.44	o	o	o
Dark Tinted Rear Windows (Rear Windows and Rear Screen – includes Laminated Side Luggage Area Windows)	£212.77	£37.23	£250.00	€374.00	o	o	o
Inclination Sensor	£106.88	£18.62	£125.00	€187.00	o	o	o
ISOFIX Attachment (Rear Seats)	£23.83	£4.17	£28.00	€41.89	o	o	o
Power Child Locks (Rear Doors)	£63.83	£11.17	£75.00	€112.20	o	o	o
Integrated Booster Cushions x 2	£221.28	£38.72	£260.00	€388.96	o	o	o
INTERIOR	Basic £	VAT £	Rec Retail Price £	Rec Retail Price € ⁽ⁱ⁾	S	SPORT	SE
Automatic Transmission (2.4 (140/170 bhp), 2.0T & Bi-Fuel only)	£936.17	£163.83	£1,100.00	€1,645.60	o	o	o
Geartronic Transmission (2.5T, 2.5T AWD, D5, D5 AWD & T5 only)	£1,063.83	£186.17	£1,250.00	€1,870.00	o	o	o
Speed Dependent Steering System	£191.49	£33.51	£225.00	€336.60	o	o	o
Electric Glass Tilt & Slide Sunroof	£723.40	£126.60	£850.00	€1,271.60	o	o	o
Electric Folding Door Mirrors with Ground Lights	£170.21	£29.79	£200.00	€299.20	o	•	•
Autodimming Rear View Mirror	£170.21	£29.79	£200.00	€299.20	o	•	•
Front and Rear Ashtray, Cupholder in Tunnel Console and Front Cigarette Lighter ^(vi)	–	–	–	–	nco	nco	nco
Rear Cupholders (Armrest)	£29.79	£5.21	£35.00	€52.36	o	o	o
Foldable Table and Dual Cupholders (Rear)	£63.83	£11.17	£75.00	€112.20	o	o	o
Grocery Bag Holder (Luggage Area) ^(vi)	£85.11	£14.89	£100.00	€149.60	o	•	•
Rear Waste Bag/Bottle Holder	£17.02	£2.98	£20.00	€29.92	o	•	•
First Aid Kit	£21.28	£3.72	£25.00	€37.40	o	o	o
Electric Driver's Seat (with Memory) and Door Mirror Memory	£510.64	£89.36	£600.00	€897.60	o	o	•
Electric Driver and Passenger Seats (with Driver's Memory) and Door Mirror Memory	£1,021.28	£178.72	£1,200.00	€1,795.20	o	o	u (£600)
Rear Facing Seats in Cargo Area ^(vi, viii, ix, xi) (not Bi-Fuel)	£425.53	£74.47	£500.00	€748.00	o	o	o
Heated Front Seats	£191.49	£33.51	£225.00	€336.60	o	o	o
3-Spoke Wood/Leather Steering Wheel ^(x)	£204.26	£35.74	£240.00	€359.04	o	n/a	o
Space Ball Gear Knob Manual Only (Std T5 SE Manual) ^(viii)	£63.83	£11.17	£75.00	€112.20	o	•	o
Walnut Wood Trim	£425.53	£74.47	£500.00	€748.00	o	n/a	u (£250)
Black Mesh Trim	£212.77	£37.23	£250.00	€374.00	o	nco	nco
Mesh Aluminium Trim	£212.77	£37.23	£250.00	€374.00	o	•	•
Luxury Floor Mats	£85.11	£14.89	£100.00	€149.60	o	o	o
Vestborg Textile/Leather Sports Upholstery	£553.19	£96.81	£650.00	€972.40	o	•	n/a
Leather-faced Upholstery	£1,021.28	£178.72	£1,200.00	€1,795.20	o	n/a	n/a
Leather-faced Sports Upholstery	£1,106.38	£193.62	£1,300.00	€1,944.80	o	u (£650)	•
Sovereign Hide Soft Leather Sports Upholstery	£2,212.77	£387.23	£2,600.00	€3,889.60	o	u (£1,950)	u (£1,300)
High Performance Sound Audio System HU-850 RDS 6 x CD Radio with Dolby Pro Logic II Surround Sound ^(viii) , 4 x 50W Amplifier and 9 Speakers	£425.53	£74.47	£500.00	€748.00	o	o	•
Premium Sound Audio System HU-850 RDS 6 x CD Radio with Dolby Pro Logic II Surround Sound ^(viii) , 4 x 75W Amplifier and 11 Speakers	£638.30	£111.70	£750.00	€1,122.00	o	o	u (£250)
4 x 50W Amplifier for HU-650	£127.66	£22.34	£150.00	€224.40	o	o	•
Sub Woofer Under Load Floor Area ^(viii) (not Bi-Fuel)	£153.19	£26.81	£180.00	€269.28	o	o	o
Preparation for Accessory 10 x CD Changer & Digital Jukebox	£29.79	£5.21	£35.00	€52.36	o	o	o
RTI Navigation System, Remote Control with Europe DVD Map, without TV	£1,872.34	£327.66	£2,200.00	€3,291.20	o	o	o
RTI Navigation System, Remote Control with Europe DVD Map and TV	£2,297.87	£402.13	£2,700.00	€4,039.20	o	o	o
Dual Band Integrated GSM Telephone ^(vi)	£595.74	£104.26	£700.00	€1,047.20	o	o	o
EXTERIOR	Basic £	VAT £	Rec Retail Price £	Rec Retail Price € ⁽ⁱ⁾	S	SPORT	SE
Black Paint (Solid)	£212.77	£37.23	£250.00	€374.00	o	o	o
Metallic/Pearlescent Paint	£468.09	£81.91	£550.00	€822.80	o	o	o
16" Electra Alloy Wheels – 205/55 R16 89W Tyres	–	–	–	–	nco	n/a	n/a
16" Eurus Alloy Wheels – 215/55 R16 91W Tyres	£42.55	£7.45	£50.00	€74.80	o	n/a	nco
16" Ursa Alloy Wheels – 215/55 R16 93W Tyres	£42.55	£7.45	£50.00	€74.80	o	n/a	nco
17" Orpheus Alloy Wheels – 225/45 R17 91W Tyres	–	–	–	–	n/a	•	nco
17" Orestes Alloy Wheels – 225/45 R17 91W Tyres	£340.43	£59.57	£400.00	€598.40	o	nco	•
17" Thor Alloy Wheels – 225/45 R17 90W Tyres	£340.43	£59.57	£400.00	€598.40	o	nco	nco
Alloy Spare Wheel (To Match Fitted Wheels) (not with 17", 18" or Bi-Fuel) ^(viii)	£140.43	£24.57	£165.00	€246.84	o	n/a	n/a
Large Steel Spare Wheel (not with 17", 18" or Bi-Fuel) ^(viii)	£85.11	£14.89	£100.00	€149.60	o	n/a	o
Headlamp Cleaning System	£191.49	£33.51	£225.00	€336.60	o	o	o
Bi-Xenon Headlamps with Headlamp Cleaning System	£595.74	£104.26	£700.00	€1,047.20	o	o	o
Rear Park Assist	£289.36	£50.64	£340.00	€508.64	o	o	o
Rear Spoiler	£212.77	£37.23	£250.00	€374.00	o	•	o
Roof Rails	–	–	–	–	nco	nco	nco
Load Compensating Suspension (std. Bi-Fuel) ^(viii)	£425.53	£74.47	£500.00	€748.00	o	o	o
Lowered Sport Chassis with Load Compensating Suspension (not AWD & Bi-Fuel) ^(viii)	£595.74	£104.26	£700.00	€1,047.20	o	o	o
Active Four-C Chassis (Continuously Controlled Chassis Concept)	£936.17	£163.83	£1,100.00	€1,645.00	o	o	o
Engine Badge Deletion (not 2.4 (140 bhp))	–	–	–	–	nco	nco	nco
Rain Sensor – Automatic Windscreen Wiper Activation	£123.40	£21.60	£145.00	€216.92	o	•	•
WINTER PACK	Basic £	VAT £	Rec Retail Price £	Rec Retail Price € ⁽ⁱ⁾	S	SPORT	SE
Heated Front Seats, Headlamp Cleaning System and Luxury Floor Mats	£297.87	£52.13	£350.00	€523.60	o	o	o
BI-XENON PACK							
Bi-Xenon Headlamps, Headlamp Cleaning System, Heated Front Seats and Luxury Floor Mats	£723.40	£126.60	£850.00	€1,271.60	o	o	o
FAMILY PACK							
Foldable Table and Dual Cupholders (Rear), Power Child Locks (Rear Doors) and Integrated Booster Cushions x 2	£255.32	£44.68	£300.00	€448.80	o	o	o
PREMIUM PACK							
Electric Passenger Seats, Premium Sound Audio System HU-850 RDS 6 x CD Radio with Dolby Pro Logic II Surround Sound ^(viii) , 4 x 75W Amplifier and 13 Speakers, Walnut Wood Trim, Bi-Xenon Headlamps, Headlamp Cleaning System, Heated Front Seats and Luxury Floor Mats	£1,531.91	£268.09	£1,800.00	€2,692.80	n/a	n/a	o
COMMUNICATIONS PACK 1							
Volvo On Call ^(vii) , Dual Band Integrated GSM Telephone ^(vi) , RTI Navigation System, Remote Control with Europe DVD Map	£2,255.32	£394.68	£2,650.00	€3,964.40	o	o	o
COMMUNICATIONS PACK 2							
Volvo On Call ^(vii) , Dual Band Integrated GSM Telephone ^(vi) , RTI Navigation System, Remote Control with Europe DVD Map and TV	£2,595.74	£454.26	£3,050.00	€4,562.80	o	o	o
SPORTS HANDLING PACK (not Bi-Fuel)							
18" Nebula (BBS)/18" Capella Alloy Wheels – 235/40 R18 Tyres, Active Four-C Chassis ^(viii) and Speed Dependent Steering System	£1,936.17	£338.83	£2,275.00	€3,403.40	o	n/a	n/a
Upgrade for Sport and SE (not Bi-Fuel)	£1,787.23	£312.77	£2,100.00	€3,141.60	n/a	o	o

ACCESSORIES	Basic £	VAT £	Rec Retail Price £	Rec Retail Price € ⁽ⁱ⁾
EXTERIOR ACCESSORIES (PRICES EXCLUDE FITTING UNLESS SHOWN OTHERWISE)				
Bike Rack (down tube clamp)	£51.06	£8.94	£60.00	€89.76
Bike Rack (servo lift)	£80.85	£14.15	£95.00	€142.12
Bike Rack (cargo area)	£51.06	£8.94	£60.00	€89.76
Bumper Protector	£42.55	£7.45	£50.00	€74.80
Front Park Assist ⁽ⁱⁱ⁾	£289.36	£50.64	£340.00	€508.64
Load Basket	£85.11	£14.89	£100.00	€149.60
Mud Flaps (front)	£21.28	£3.72	£25.00	€37.40
Mud Flaps (back)	£21.28	£3.72	£25.00	€37.40
Roof Protection Ribs	£66.38	£11.62	£78.00	€116.70
Roofbox – Sport Time 50 (310 litre volume)	£187.23	£32.77	£220.00	€329.12
Roofbox – Weekender (370 litre volume)	£212.77	£37.23	£250.00	€374.00
Roofbox – Dynamic 65 (405 litre volume)	£229.79	£40.21	£270.00	€403.92
Roofbox – Sport Time 20 (450 litre volume)	£263.83	£46.17	£310.00	€463.76
Roofbox – Dynamic 85 (510 litre volume)	£297.87	£52.13	£350.00	€523.60
Ski/Snowboard Carrier with Slide Rail	£59.58	£10.42	£70.00	€104.72
Snow Chain – standard version (variety available)	£119.15	£20.85	£140.00	€209.44
Towbar – Fixed Type with 7 Pin Electrics ⁽ⁱⁱⁱ⁾	£243.69	£42.65	£286.34	€428.36
Towbar – Fixed Type with 13 Pin Electrics ⁽ⁱⁱⁱ⁾	£298.09	£52.17	£350.26	€523.98
Towbar – Detachable Type with 7 Pin Electrics ⁽ⁱⁱⁱ⁾	£311.51	£54.51	£366.02	€547.56
Towbar – Detachable Type with 13 Pin Electrics ⁽ⁱⁱⁱ⁾	£365.91	£64.03	£429.94	€643.20
Towbar – Flange Type with 7 Pin Electrics ⁽ⁱⁱⁱ⁾	£260.45	£45.58	£306.03	€457.82
Towbar – Flange Type with 13 Pin Electrics ⁽ⁱⁱⁱ⁾	£311.45	£54.50	£365.95	€547.46

INTERIOR ACCESSORIES				
Boot Mat – rubber	£72.34	£12.66	£85.00	€127.16
Boot Mat – textile/rubber reversible	£76.60	£13.40	£90.00	€134.64
Coin Compartment	£8.51	£1.49	£10.00	€14.96
Cooler/Hot Box (excludes price for power cable)	£68.09	£11.92	£80.00	€119.68
Cargo Area Divider ^(iv)	£42.55	£7.45	£50.00	€74.80
Cargo Area Divider and Dog Gate ^(iv)	£63.83	£11.17	£75.00	€109.50
Fire Extinguisher (excludes installation kit)	£21.28	£3.72	£25.00	€37.40
Hands-free Phone System (inc Audio Mute Function)		Available Late 2004		
Load Liner – full cargo area	£55.32	£9.68	£65.00	€97.24
Load Cover (cargo area)	£153.19	£26.81	£180.00	€269.28
Load Securing Straps (cargo area)	£17.02	£2.98	£20.00	€29.92
Load Securing Net (cargo area)	£59.58	£10.43	£70.00	€104.72
Net Pocket (cargo area)	£25.53	£4.47	£30.00	€44.88
Padded Neck Cushion	£17.02	£2.98	£20.00	€29.92
PC Table for Laptop Computers	£59.58	£10.43	£70.00	€104.72
RSE (Rear Seat Entertainment) (2 x 6" Screens in Headrests) ^{(iii),(iv)}	£2,127.66	£372.34	£2,500.00	€3,740.00
Rear Facing Seats in Cargo Area ⁽ⁱⁱⁱ⁾ (D5 AWD Geartronic)	£553.19	£96.81	£650.00	€972.40
Rubber Floor Mats (set of four)	£63.83	£11.17	£75.00	€109.50
Steel Safety Grill (for behind second row seats)	£119.15	£20.85	£140.00	€209.44
Sunblind – rear door windows (pair)	£51.06	£8.94	£60.00	€89.76
Table & Seat Cushions	£110.64	£19.36	£130.00	€194.48
Table (rear centre armrest)	£17.02	£2.98	£20.00	€29.92

CHILD SEATS				
Child Booster Cushion	£29.79	£5.21	£35.00	€52.36
Child Booster Backrest (to go with above)	£29.79	£5.21	£35.00	€52.36
Padded Upholstery – for booster seat and headrest	£51.06	£8.94	£60.00	€89.76

- (i) Euro prices shown are calculated using an exchange rate of 1.496 Euros to the £, as published in the Financial Times on 31st March 2004. Euro prices will be subject to the prevailing exchange rate at the time of purchase. These figures are for information purposes only.
- (ii) Must be installed with Steel Safety Grille (additional cost).
- (iii) Indicates total fitted price post registration. At participating dealers only. To find out who is a participating dealer contact the Volvo Helpline on 0800 400 430.
- (iv) Must be ordered in conjunction with Leather Upholstery. Please see dealer for details re: compatibility with other options.
- (v) Grocery Bag Holder, Load Cover and Load Protection Net are removed when this item is ordered. Cannot be ordered in conjunction with Sub Woofer.
- (vi) Denotes the colour of the door panels above the Inlay Trim.

For further information and a complete list of Volvo Accessories, just take a look at the new Accessory website at www.volvocars.co.uk/accessories.

UPHOLSTERY	Code	Upholstery/Door Colour	Dashboard Top Door Panel Colour ^(vi)	Door Insert Colour	Headliner Colour
Kilen Textile	A17K	Off Black	Off Black	Off Black	Granite
	A18K	Oak	Oak	Oak	Arena
Vestborg Textile/Leather Sports	AG51	Light Sand	Beige	Light Sand	Light Sand
	AG70	Off Black	Off Black	Off Black	Granite
	AG81	Arena	Oak	Arena	Arena
Select Leather-faced	A951	Light Sand	Beige	Light Sand	Light Sand
	A970	Off Black	Off Black	Off Black	Granite
	A980	Oak	Oak	Oak	Arena
	A981	Arena	Oak	Arena	Arena
Select Leather-faced Sports	AA51	Light Sand	Beige	Light Sand	Light Sand
	AA70	Off Black	Off Black	Off Black	Granite
	AA80	Oak	Oak	Oak	Arena
	AA81	Arena	Oak	Arena	Arena
Sovereign Hide Soft Leather Sports	A770	Off Black	Off Black	Off Black	Granite
	A77L	Linen White	Off Black	Off Black	Arena
	A78C	Arena	Oak	Arena	Arena
	A78L	Linen White	Oak	Linen White	Arena

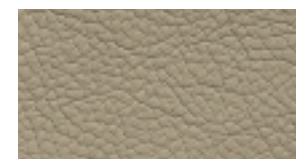


UPHOLSTERY

BEIGE/LIGHT SAND



Vestborg Textile/Leather Sports
Light Sand (AG51)

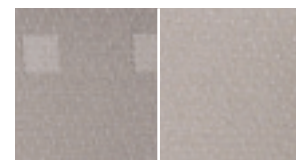


Leather-faced
Light Sand (A951)



Leather-faced Sports
Light Sand (AA51)

OAK



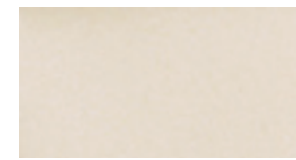
Kilen Textile
Oak (A18K)



Leather-faced
Oak (A980)



Leather-faced Sports
Oak (AA80)

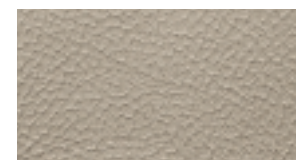


Sovereign Hide Soft Leather
Sports Linen White (A78L)

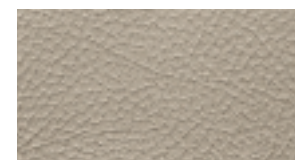
OAK/ARENA



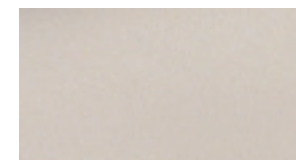
Vestborg Textile/Leather Sports
Arena (AG81)



Leather-faced
Arena (A981)

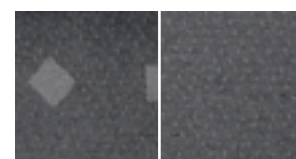


Leather-faced Sports
Arena (AA81)

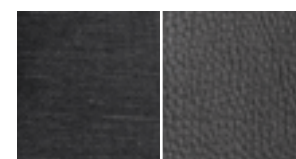


Sovereign Hide Soft Leather
Sports Arena (A78C)

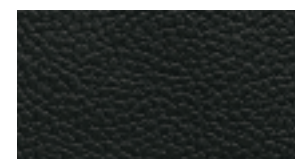
OFF BLACK



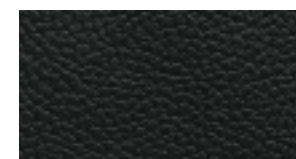
Kilen Textile
Off Black (A17K)



Vestborg Textile/Leather Sports
Off Black (AG70)



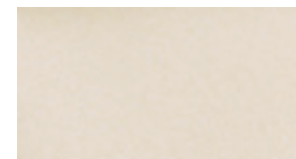
Leather-faced
Off Black (A970)



Leather-faced Sports
Off Black (AA70)

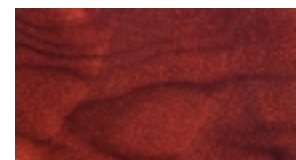


Sovereign Hide Soft Leather
Sports Off Black (A770)



Sovereign Hide Soft Leather
Sports Linen White (A77L)

INTERIOR INLAYS



Walnut Wood



Mesh Aluminium



Black Mesh

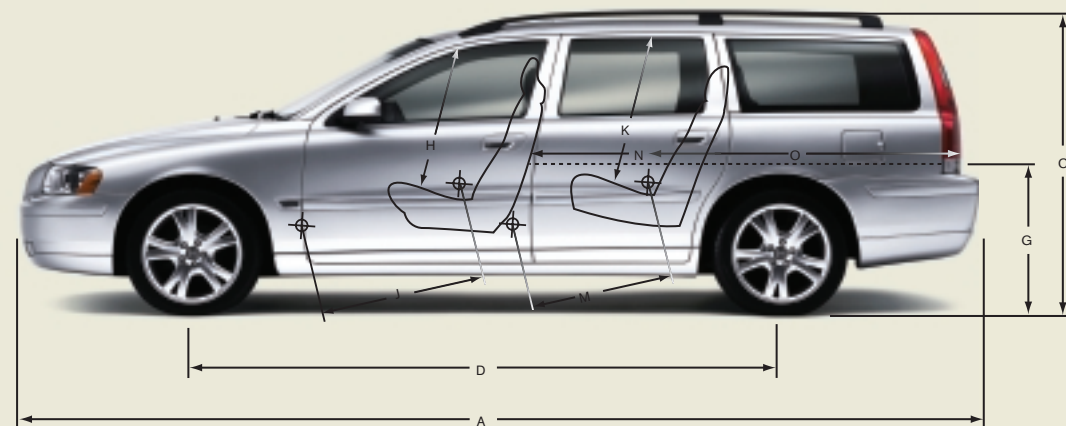
NB It is not possible to reproduce exact original shades in printed matter.

ENGINE	2.0T	2.4 (140 bhp)	2.4 (170 bhp)	2.5T/2.5T AWD	D5/D5 AWD	T5	2.4 Bi-Fuel LPG ⁽ⁱ⁾ Petrol		2.4 Bi-Fuel CNG ⁽ⁱⁱ⁾ Petrol	
Configuration	Transverse 20 valve	Transverse 20 valve	Transverse 20 valve	Transverse 20 valve	Transverse 20 valve	Transverse 20 valve	Transverse 20 valve		Transverse 20 valve	
Cylinders	5	5	5	5	5	5	5		5	
Engine capacity, cc	1984	2435	2435	2521	2401	2401	2435		2435	
Bore & stroke, mm	81 x 77	83 x 90	83 x 90	83 x 93	81 x 93	81 x 93	83 x 90		83 x 90	
Max. output ECE bhp kw rpm	180 132 5500	140 103 4500	170 125 6000	210 154 5000	163 120 4000	260 191 5500	140 103 5100	140 103 4500	140 103 5800	140 103 4500
Max. torque ECE Nm rpm	240 1850-5000	220 3300	225 4500	320 1500-4500	340 1750-3000	350 2100-5000	214 4500	220 3300	192 4500	220 3300
Octane rating	95-98 RON unleaded ^(v)	95-98 RON unleaded ^(v)	95-98 RON unleaded ^(v)	95-98 RON unleaded ^(v)	Diesel	95-98 RON unleaded ^(v)	LPG	95-98 RON unleaded ^(v)	CNG	95-98 RON unleaded ^(v)
Fuel system	Multipoint fuel injection	Multipoint fuel injection	Multipoint fuel injection	Multipoint fuel injection	Multipoint direct fuel injection	Multipoint direct fuel injection	Multipoint fuel injection		Multipoint fuel injection	
Compression ratio	9.5:1	10.3:1	10.3:1	9.0:1	18.0:1	8.5:1	10.3:1		10.3:1	

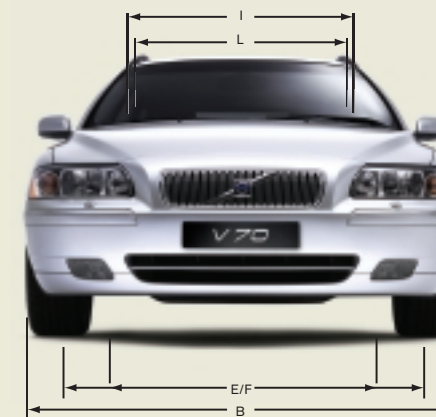
INSURANCE GROUPS	2.0T	2.4 (140 bhp)	2.4 (170 bhp)	2.5T	2.5T AWD	D5	D5 AWD	T5	2.4 Bi-Fuel (LPG ⁽ⁱ⁾)	2.4 Bi-Fuel (CNG ⁽ⁱⁱ⁾)
Volvo V70	13 E	13 E	13 E	16 E	15 E	13 E	13 E	16 E	13 E	13 E

E = Exceeds security requirements for model concerned and group rating has been reduced.

WEIGHTS	2.0T	2.4 (140 bhp)	2.4 (170 bhp)	2.5T	2.5T AWD	D5	D5 AWD	T5	2.4 Bi-Fuel (LPG ⁽ⁱ⁾)	2.4 Bi-Fuel (CNG ⁽ⁱⁱ⁾)
Min. kerb weight, kg (actual kerb weight dependent on spec.)	1565	1528	1525	1569	1657	1611	1710	1600	1587	1609
Max. possible towing weight braked, kg (1600 auto)	1800	1800	1800	1800	1800	1800	1800	1800	1800	1800
Max. towing weight unbraked approx, kg ^(vi)	750	750	750	750	750	750	750	750	750	750
Max. total weight, kg	2150	2150	2150	2150	2200	2150	2200	2150	2150	2150
Max. roof load, kg	100	100	100	100	100	100	100	100	100	100
Max. payload, kg (dependent on spec.)	585	625	625	581	543	539	490	550	563	541



EXTERIOR (mm)	INTERIOR (mm)
A Overall length	4710
B Overall width (exc. wing mirrors)	1804
C Unladen height	1465 (AWD 1490)
D Wheelbase length	2755
E Front track width	1551
F Rear track width	1548
G Ground to boot base height 553 (AWD 585)	
	H Front seat max. headroom ^(viii)
	I Front seats width
	J Front seat max. legroom
	K Rear seat max. headroom ^(viii)
	L Rear seats width
	M Rear seat max. legroom
	N Luggage load length 2 seat mode ^(ix)
	O Luggage load length 5 seat mode ^(ix)



PERFORMANCE		2.0T	2.4 (140 bhp)	2.4 (170 bhp)	2.5T	2.5T AWD	D5	D5 AWD	T5	2.4 Bi-Fuel LPG ⁽ⁱ⁾ Petrol		2.4 Bi-Fuel CNG ⁽ⁱⁱ⁾ Petrol	
Top speed (mph)	Man	137	127	137	143	140	130	130	155	127	127	127	127
	Auto	130	124	134	140	137	130	124	152	124	124	124	124
Acceleration 0-62mph (sec)	Man	9.0	10.5	9.0	7.4	7.6	9.8	10.3	6.8	10.6	10.5	11.0	10.5
	Auto	9.5	11.4	9.9	7.8	8.0	10.2	11.3	7.2	11.5	11.4	11.9	11.4

TRANSMISSION	All models
Manual	5 (D5 AWD 6-Speed)
Automatic ⁽ⁱⁱⁱ⁾	5

POWER STEERING SYSTEM	All models
(rack & pinion) Turning circle, m (ft) 205-235 (16"-18") section tyres	11.9 - 12.0 (39' 0" - 39' 4")

BRAKES	2.4 (140/170)/D5/2.4 Bi-Fuel (LPG ⁽ⁱ⁾)/(CNG ⁽ⁱⁱ⁾)	2.0T/2.5T/2.5T AWD/D5 AWD	T5
Disc diameter, mm front	15"-286 Ventilated	16"-305 Ventilated	16.5"-316 Ventilated
Disc diameter, mm rear	15"-288	16"-288	16.5"-288

LUGGAGE COMPARTMENT	V70 to Glass-line	V70 to Roof
Volume, litres (cu. ft)	485 (17.1)	
Volume, rear seats down, litres (cu. ft)	745 (26.3)	1641 (58.0)

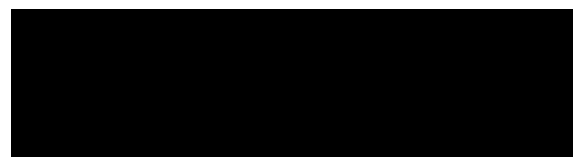
FUEL CONSUMPTION ^(iii,iv)		2.0T	2.4 (140 bhp)	2.4 (170 bhp)	2.5T	2.5T AWD	D5	D5 AWD	T5	2.4 Bi-Fuel LPG ⁽ⁱ⁾ Petrol		2.4 Bi-Fuel CNG ⁽ⁱⁱ⁾ Petrol	
Urban - mpg (l/100km)	Man	22.2(12.7)	22.8(12.4)	22.4(12.6)	21.9(12.9)	20.8(13.6)	32.5 (8.7)	30.1 (9.4)	22.1 (12.8)	17.4(16.2)	22.1(12.8)	21.6 (13.1)	22.8 (12.4)
	Auto	20.0(14.1)	20.9(13.5)	20.6(13.7)	19.6(14.4)	19.1(14.8)	25.9 (10.9)	25.4 (11.1)	19.3 (14.6)	15.1(18.7)	19.8(14.3)	19.3 (14.6)	20.2 (14.0)
Extra urban - mpg (l/100km)	Man	40.4 (7.0)	40.9 (6.9)	39.2 (7.2)	39.8 (7.1)	36.7 (7.7)	54.3 (5.2)	47.1 (6.0)	38.2 (7.4)	29.1 (9.7)	37.7 (7.5)	38.7 (7.3)	40.9 (6.9)
	Auto	37.7 (7.5)	38.2 (7.4)	37.7 (7.5)	36.7 (7.7)	34.4 (8.2)	45.6 (6.2)	41.5 (6.8)	37.2 (7.6)	27.4 (10.3)	37.7 (7.5)	36.7 (7.7)	36.2 (7.8)
Combined - mpg (l/100km)	Man	31.0 (9.1)	31.4 (9.0)	30.7 (9.2)	30.7 (9.2)	28.5 (9.9)	43.5 (6.5)	38.7 (7.3)	29.7(9.5)	23.3 (12.1)	30.1 (9.4)	30.1 (9.4)	31.4 (9.0)
	Auto	28.5 (9.9)	29.1 (9.7)	28.8 (9.8)	28.0 (10.1)	26.6 (10.6)	35.8 (7.9)	33.6 (8.4)	28.2(10.0)	21.1 (13.4)	28.2 (10.0)	27.4 (10.3)	28.2 (10.0)
CO ₂ g/km	Man	217	214	220	219	237	171	194	226	195	225	169	215
	Auto	237	231	234	241	255	209	223	239	218	240	183	240
VED (Vehicle Excise Duty) Band	Man	D	D	D	D	D	C	D	D	D	D	C	
	Auto	D	D	D	D	D	D	D	D	D	D	D	

PERFORMANCE	All models
Drag co-efficient	0.30 (AWD 0.33)

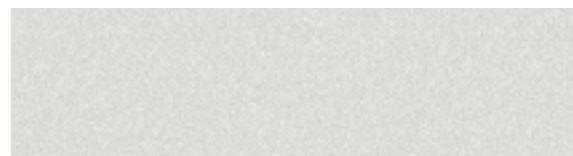
FUEL TANK	Non Bi-Fuel models	2.4 Bi-Fuel (LPG ⁽ⁱ⁾)	2.4 Bi-Fuel (CNG ⁽ⁱⁱ⁾)
Volume, litres (gallons)	70 (15.4) (D5 AWD 68 (15.0))	50 (11.0) LPG 29 (6.4) Petrol	23 Nm ³ (Slow Fill) CNG 29 (6.4) Petrol

- (i) Liquefied Petroleum Gas.
- (ii) Compressed Natural Gas.
- (iii) These results do not express or imply any guarantee of the fuel consumption of a particular car as there are inevitable differences between individual cars of the same model. Additionally driving style, traffic conditions, as well as the age and mileage and standard of maintenance will affect a car's fuel consumption.
- (iv) The Urban fuel consumption figure is based on typical city driving, including starting the car from cold. The Extra Urban figure is based on typical motorway driving and cruising. The Combined figure averages the consumption across both cycles.
- (v) For best performance and lowest fuel consumption 98 RON is recommended. 95 RON can be used for normal driving.
- (vi) Unbraked towing weight must not exceed 50% of kerb weight up to a maximum of 750 kg.
- (vii) 2.5T, D5 and T5 transmission is 5-speed Geartronic.
- (viii) Figure quoted without sunroof.
- (ix) Measurements taken at height of floor covering.

Notes
The weight of the vehicle will influence the level of CO₂ emitted. As a result, vehicles with higher levels of specification and factory fit options may emit higher levels of CO₂. Once a vehicle has been built it will be given its own specific CO₂ emission on which the Vehicle Excise Duty will be charged.
A weighbridge must be used to determine specific weights. Data valid for manual transmission unless specified. All measurements in mm.
NB Some of the information in this price list may not be correct due to product changes which may have occurred since it was printed. Some of the equipment described or shown may now be available at extra cost. Before ordering, please ask your Volvo dealer for the latest information. The manufacturer reserves the right to make changes at any time, without notice, to price, colour, materials, specifications and models.
Volvo Car UK Limited, Globe Park, Marlow, Buckinghamshire, SL7 1YQ



019 Black Stone



426 Silver metallic



446 Ash Gold pearl



449 Mistral Green metallic



452 Black Sapphire metallic



454 Ruby Red pearl



455 Titanium Grey pearl



459 Dawn Blue pearl



465 Cedar Green pearl



466 Barents Blue pearl



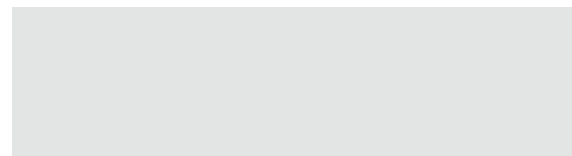
467 Magic Blue pearl



612 Passion Red



613 Deep Blue



614 Ice White

CARE
BY VOLVO

IT'S SIMPLICITY ITSELF. ONE POINT OF CONTACT FOR ALL YOUR CAR OWNERSHIP NEEDS. WHETHER IT'S ABOUT FINDING THE RIGHT FINANCE DEAL OR WHO TO CONTACT IN AN EMERGENCY. TRUST CARE BY VOLVO TO ENJOY A VERY SPECIAL CAR OWNERSHIP.

STARTING OFF ON THE RIGHT FOOT
You'll be surprised how easy and flexible financing can be. Our range of finance, service and insurance options allow you to budget around one key factor - your lifestyle.

MAKING LIFE EASIER
Owning a Volvo is all about discovering the safest, most exciting, driving experience. To ensure it always stays that way, we're committed to providing you with the best in aftersales support.

LOOKING AHEAD
You'll probably never find out just how good some of our services are, but should the unexpected happen you'll discover yet more reasons why buying a Volvo was the right choice.

FINANCE/LEASE

As part of Volvo, Volvo Car Finance has developed a series of finance plans that will provide you with maximum choice and flexibility when acquiring a Volvo.

INSURANCE

Statistics show Volvo drivers have fewer accidents. That means Volvo Owners Insurance can offer competitive premiums with tailored protection and exclusive benefits. Operated in partnership with The Royal & SunAlliance, one telephone call even deals with all arrangements for any claim. Call direct on 0800 238 239 to obtain a free no obligation quote⁽ⁱ⁾.

SERVICE PROGRAMME

Your Volvo dealer has the unique know-how to tailor a service programme according to Volvo's strict recommendations and guarantees you years of safety and driving pleasure.

ROADSIDE ASSISTANCE

Every new car comes with one year's free RAC cover. You'll enjoy full breakdown and recovery assistance, anywhere in Europe, 24 hours a day. You can even extend cover for up to two more years at preferential rates.

WARRANTY

Every new Volvo comes with comprehensive protection. Our warranty covers the first three years or 60,000 miles, whichever comes first. There's a three year unlimited warranty on the paintwork, and a full eight years against rust perforation. If a component fails due to a defect or material fault, your dealer will swiftly rectify the problem, free of charge.

All 'On The Road' prices quoted in this price list include Volvo standard national delivery charge, inclusive of number plates, at £480 and the VED (Vehicle Excise Duty) car tax effective from 1st March 2000. The 'On The Road' price also includes a £38 vehicle first registration fee (as set by the government), effective since 1st April 1998 (excludes Channel Islands and Isle of Man). Retail prices quoted do not include these additions.

For tax free sales, including Military, Diplomat and all other Export enquiries, contact Volvo Car UK Ltd (Military, Diplomat and International Customer Sales) on 01707 262388, e-mail to vcuktds@volvocars.com or bms@volvocars.com

WHAT NEXT? If you'd like to find out more about the range of products and services that make up Care by Volvo, the story continues at www.volvocars.co.uk

Alternatively you can contact your nearest Volvo dealer or request relevant brochures.

(i) Volvo Owners Insurance is underwritten by Royal & Sun Alliance Insurance plc No. 93792. Registered in England and Wales at St Mark's Court, Chart Way, Horsham, West Sussex RH12 1XL. Member of the General Insurance Standards Council. For your protection telephone calls will be recorded and may be monitored.

N.B. It is not possible to reproduce exact original shades in printed matter. Please ask your dealer to show you samples.

VOLVO

Volvo Car UK Limited
www.volvocars.co.uk