



VOLVO XC60

# QUICK GUIDE

WEB EDITION



## WELCOME TO YOUR NEW VOLVO!

Getting to know your car is an exciting experience.

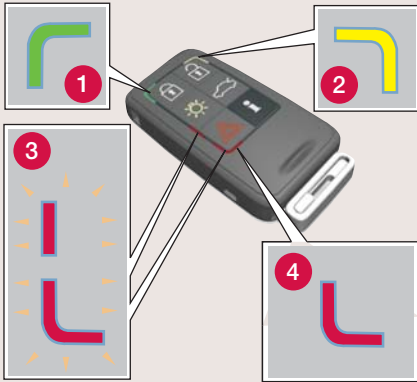
After looking through this Quick Guide you'll like your new Volvo even more. You can find detailed information in the Owner's Manual.

Warning texts and other important information are only available in the Owner's Manual, not in this folder. The Owner's Manual contains the most up-to-date information.

Options are marked with an asterisk (\*).

At [www.volvocars.com](http://www.volvocars.com) you will find further information relating to your car.

## REMOTE CONTROL KEY, PCC – PERSONAL CAR COMMUNICATOR\*, WITH KEYLESS DRIVE



### Only applies to PCC

- 1 Green light:** The car is locked.
- 2 Yellow light:** The car is unlocked.
- 3 Flashing alternating red light:** Someone may be inside the car.
- 4 Red light:** The alarm has been triggered.

**i Information** on the car can be obtained within a range of 20 metres: Press the button and wait 7 seconds.

Pressing the button out of range shows the last status stored in the memory.

**Locks the doors** and tailgate and arms the alarm\*.

**Unlocks the doors<sup>A</sup>** and tailgate and disarms the alarm.

**Unlocks the tailgate** – this does not open.<sup>B</sup>

**Approach lighting** in side mirrors\*, in the passenger compartment, at floor level and at the numberplate. Direction indicators and parking lamps come on.

**"Panic" button** – is held depressed for approx. 3 seconds in an emergency situation in order to trigger the alarm.

<sup>A</sup> Automatic relocking takes place if a door/tailgate is not opened within 2 minutes after unlocking.

<sup>B</sup> Car with power operated tailgate – the tailgate opens.

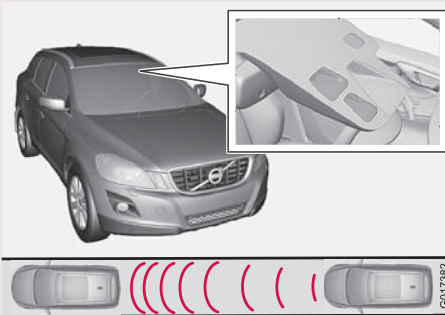
### IMPORTANT

With keyless drive the PCC only needs to be inside the car. Keep it in your pocket for example when you go to and from the car and while driving.

The car is unlocked when someone grips the outer handle of a door.

When parking the car after driving you only need to press the button on the outside of the door to lock the car.

## CITY SAFETY



the car, thereby mitigating or even preventing a collision. When the function is activated and applies the brakes, the brake lights are switched on and the instrument panel display shows a message indicating that the function is/has been active.

City Safety™ is a function for helping the driver to avoid a collision when driving in queues, amongst other things, when changes in the traffic ahead, combined with a lapse in attention, could lead to an incident.

City Safety™ is active at speeds up to 30 km/h and it helps the driver by automatically braking

### WARNING

- Never look into the windscreen's laser sensor (marked red in the illustration) at a distance of 100 metres or less. Read more in the Owner's Manual.

## STARTING/SWITCHING OFF THE IGNITION, WITH THE REMOTE CONTROL KEY



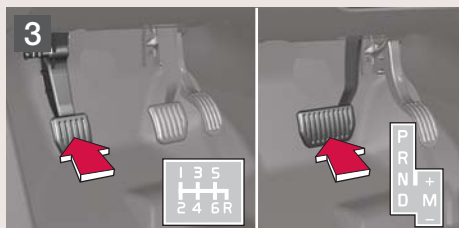
### START



1 Insert the remote key in the ignition switch.<sup>A</sup>



2 Press gently on the remote key, which is then pulled in.



3 Depress the clutch or brake pedal.



4 Press the **START/STOP/ENGINE** button to start the engine.<sup>B</sup>

<sup>A</sup> Not with Keyless drive, it is sufficient that the PCC is inside the car, e.g. in a storage compartment.

<sup>B</sup> The idling speed may be slightly higher for a short time during cold starting.

### SWITCH OFF THE ENGINE AND REMOVE THE REMOTE KEY



1 Park the car and press the **START/STOP/ENGINE** button to switch off the engine.



2 Press gently on the remote key, which is then pushed out. The automatic transmission must be in **P** position.

### LEATHER CARE



Leather upholstery requires regular cleaning. Treat with leather care products, 1–4 times a year or as required. Leather care products are available from your Volvo dealer.

### BLIS – BLIND SPOT INFORMATION SYSTEM\*



If the BLIS' indication lamp illuminates despite no vehicle being in the blind spot, the cause could be reflection from wet road surface or low sun shining into the camera for example. In the event of a direct fault in the system the display shows the text **Blind spot syst. Service required.**



### 1 Press for ON/OFF

#### Turn to adjust the audio volume

Radio, TP, Handsfree \* and RTI volume are stored individually for the next time they are used.

### 2 Select AM, FM1, FM2, CD or MODE.

Use MODE to activate AUX<sup>A</sup> and to adjust the AUX audio source volume.

### 3 Set the sound pattern.

Press the button to select BASS, TREBLE, FADER, BALANCE, Dolby Pro Logic II\* or SUBWOOFER\*.

Turn the control to adjust.

<sup>A</sup> AUX input for e.g. MP3 player (set volume at medium for optimum audio reproduction).

## RADIO

### 3 Turn to select radio station

**4 Search station** with left/right arrow. Store up to 20 stations by holding down **0-9** on **FM1** and **0-9** on **FM2**. When a station has been stored it is confirmed in the display.

### 5 Autostore the 10 strongest stations

**Depress AUTO** for approx. 2 seconds. Autostoring is shown in the display for as long as the search continues.

**Then** select 0-9 to playback one of the stored radio stations.

## RADIO SYSTEM - DAB\*

DAB (Digital Audio Broadcasting) is a digital broadcasting system for radio which offers high-quality radio and even more radio channels.

## CD

**4 Change CD track** with left-hand/right-hand arrows, or turn (3).

**Select CD disc\*** with the up/down arrows.

### 6 Ejecting a CD disc

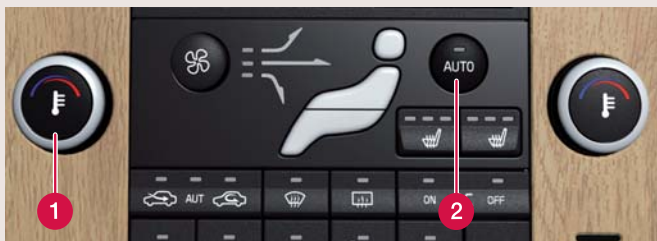
**Press** to eject the current CD disc.

**Keep the button depressed** to eject all CD discs in the CD changer\*.

**7 CD changer\***. Select CD disc 1-6.

## AUX AND USB\* (e.g. iPod®)

An iPod\* or MP3 player can be connected to the car's infotainment system via the AUX socket or the USB connection in the centre console.



### AUTOMATIC CONTROL

In **AUTO** mode the ECC system controls all functions automatically, making driving simpler with optimum air quality.

#### 1 Temperature

**Turn** the controls to select the required temperature. The set temperature is shown in the display.

#### 2 Press **AUTO** for automatic control of temperature and other functions.

### MANUAL CONTROL



**Fan speed**



**Air distribution**



**Defroster** to quickly remove misting from the windscreen and side windows.



**Air quality system.** OFF/AUT/Recirculation.



**AC Air conditioning ON/OFF**



**Heated rear window** and door mirrors. Automatic shutdown.

### STORAGE SPACES, 12 V SOCKET AND AUX

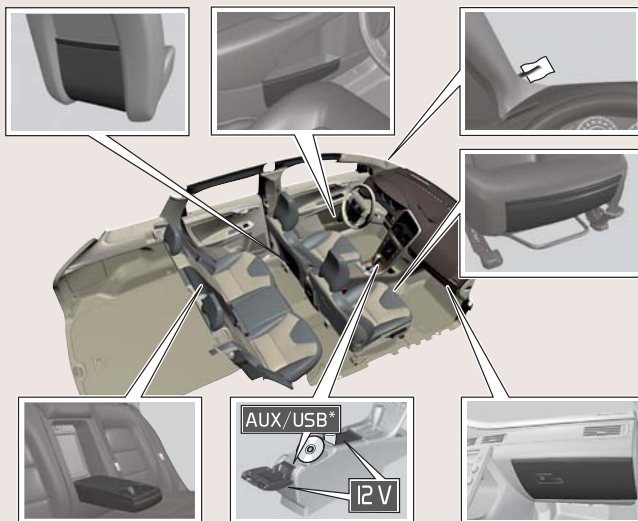


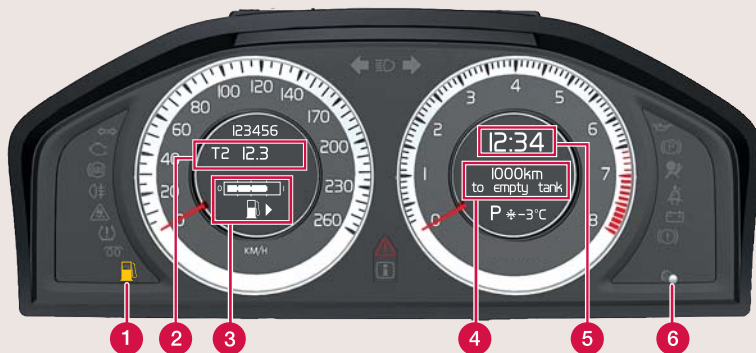
For the 12 V sockets in the centre console to work, the key has to be in the minimum position I. The 12 V socket on the right in the luggage compartment is always active.



#### **IMPORTANT**

Using the 12 V socket in the luggage compartment could discharge the battery.





**1 Low fuel level**

When the symbol is illuminated the level in the fuel tank is low, fill with fuel as soon as possible

**2 Trip meter**

The car is equipped with two independent trip meters, T1 and T2, which are always on. For switching between T1/T2 and resetting, see button (6).

**3 Fuel gauge**

The arrow shows which side the fuel filler cap is on.

**4 Range to empty tank**

Turn the trip computer thumbwheel (8) to view approximate range to empty tank.



**5 Clock**

Turn the control (6) clockwise or anticlockwise to set the clock.

**6 Multifunction control. Long press** resets the current trip meter. **Short press** shifts between T1 and T2

**Turn** to adjust the clock.

**7 Press** to read the messages in the display. **Press** again to turn off the message.

**8 Trip computer**

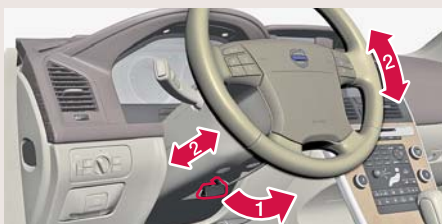
Select the required function using the thumbwheel.

**9 Resets the current function** in the trip computer.

**IMPORTANT**

"Kilometres to empty tank" is an estimate of the possible distance left to drive, based on earlier driving conditions.

ADJUSTING THE STEERING WHEEL



**WARNING!** Adjust the steering wheel before starting to drive – never do this while driving.

REFUELLING



**Press the button** to open the fuel filler flap.

## HEADLAMP CONTROL



1. Main beam flash.
2. Switch between main/dipped beam.

**Display and instrument lighting**

**Fog lamps (front)**

**Fog lamps (rear, driver's side only)**

**0** **Automatic dipped beam.** Main beam flash works but not fixed main beam.

**Parking lamps**

**Dipped beam.** Dipped beam switches off when the ignition is switched off. Main beam can be activated with the lever.

**Headlamp levelling, dipped beam.** Automatic function for Xenon lights\*.

## DRIVER SUPPORT SYSTEM\*



To help the driver to brake in time, for example, keep a safe distance from other vehicles or maintain a good road position, the car may be fitted with a number of systems:

- Adaptive cruise control\*
- Distance control\*
- Collision warning with auto brake\*
- Driver Alert System\*

## BLUETOOTH\*



1. Makes mobile phone searchable/visible
2. Hold down the **PHONE** button on the audio system
3. Select **Add phone** from the audio system display
4. Select the phone you want to connect
5. Input the digits shown in the audio system display using the mobile phone's keypad

## POWER PANORAMA ROOF\*



The first press on the control operates the sun blind – the second, the panorama roof. For manual operation, the sun blind must be in maximum position before the roof can be operated. In ventilation position the sun blind

is opened/closed automatically.

- 1 Automatic maximum opening
- 2 Manual opening
- 3 Manual closing
- 4 Automatic maximum closing
- 5 Opening ventilation position
- 6 Closing ventilation position

## KEY POSITIONS (0 & I)



The clutch/brake pedal must **not** be depressed.

### WITH REMOTE CONTROL KEY

#### POSITION 0



#### POSITION I



Audio system and passenger compartment lighting operate irrespective of key position.

- 0** Instrument/clock lighting, steering lock unlocks.
- I** Panorama roof\*, power windows, fan, ECC, windscreen wipers, 12 V socket in centre console, RTI.

## ADJUSTING THE FRONT SEAT




- 1** Lumbar support
- 2** Backrest rake
- 3** Raise/lower seat
- 4** Seat cushion front edge raise/lower
- 5** Forwards/backwards

## PARKING BRAKE



### To apply

- 1** Press the button.

 The lamp flashes until the parking brake is fully applied, after which the lamp stays on.

### To disengage

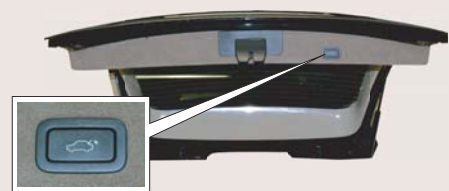
Key position **0** or **I**.  
Depress the clutch or brake pedal.

- 2** Pull out the button.

### Disengage automatically

Select a gear and drive away. (For cars with an automatic gearbox, the driver has to be wearing the seatbelt.)

## POWER OPERATED TAILGATE\*



### Opening

Depress the button for the tailgate on the lighting panel or the remote control key until the tailgate starts to open, or gently press the tailgate's rubber pressure plate under the outside handle and lift the tailgate.

### Closing

Press the tailgate button or close the tailgate manually.