



VOLVO
S60 R PRICING

VOLVO
for life



THE VOLVO S60 R

If you've been searching for a performance saloon car then look no further – the Volvo S60 R is one of the most advanced performance saloons available. Blessed with perfectly sculpted body work and a unique interior, it certainly looks the part. But it's under the surface where it really excels – take a look through this price list to find out about the S60 R's jaw dropping performance.

FOUR-C (CONTINUOUSLY CONTROLLED CHASSIS CONCEPT)

The S60 R is the world's first performance saloon without compromise thanks to its new Four-C chassis technology. Choose between three uniquely different driving modes that, at the touch of a button, radically alter the car's character. Comfort and Sport modes employ 'Skyhook' control technology to give either a flat comfortable ride or a firmer more sporting drive. Advanced Sport utilises 'Road Contact' control technology for an almost race car feel and ultimate speed.

300 BHP 5-CYLINDER TURBOCHARGED ENGINE

The new R turbocharged engine: 2.5 litres, 300 bhp, 0-62 mph in just 5.7 seconds (manual) and 400 Nm torque make it our most powerful engine yet. But what really impresses is the way that power is delivered. Four-C chassis technology with DSTC (Dynamic Stability and Traction Control) and the latest intelligent AWD optimise surface grip and traction to deliver that power where it matters most – the road. That means every ounce of power generated by the in-line 2.5 litre five-cylinder high pressure turbo-petrol engine contributes to the S60 R's surging performance. And yet the engine is equally characterised by its low emissions and refined behaviour – making it ideal for everyday driving.

UNIQUE R FEATURES

It's not often you meet a car that lives up to expectations – the S60 R however is an exception. Wherever you look, there's evidence of the car's pedigree – subtle styling changes like the aerodynamically redesigned front end, 'R' aluminium wheels and rear boot lid spoiler hint at the car's potential. Understated and elegant – the Volvo S60 R doesn't need to shout about its performance to catch your attention. Step inside and the S60 R continues to impress: 'R' embossed three spoke steering wheel, blue chronograph-inspired instruments, sports seats in a choice of three exclusive leather finishes and the most important detail of all – three chassis mode buttons on the dash.

| | |
|---------------------------------|-----|
| CHOOSE YOUR VOLVO | 2-3 |
| STANDARD AND OPTIONAL EQUIPMENT | 4-5 |
| ACCESSORIES & UPHOLSTERY | 6-7 |
| TECHNICAL SPECIFICATION | 8-9 |
| CHOOSE YOUR COLOUR | 10 |
| CARE BY VOLVO | 11 |

S60 R

The unique specification of the S60 R includes electronic climate control, blue chronograph R instrument dials, Bi-Xenon headlamps, 17" or 18" Pegasus alloy wheels, 4 x CD player and 9 speakers, DSTC (Dynamic Stability and Traction Control), R Sports seats with metallic soft leather upholstery, plus all the safety features you would expect from Volvo.

| | Basic £ | VAT £ | Rec Retail Price £ | On The Road Price £ | On The Road Price € Euros ⁽ⁱ⁾ |
|----------------------------|------------|-----------|--------------------|---------------------|--|
| PETROL | | | | | |
| S60 R (6 Speed Manual) | £28,625.53 | £5,009.47 | £33,635.00 | £34,313.00 | €51,332.25 |
| S60 R (5 Speed Geartronic) | £29,689.36 | £5,195.64 | £34,885.00 | £35,563.00 | €53,202.25 |



(i) Euro prices shown are calculated using an exchange rate of 1.496 Euros to the £, as published in the Financial Times on 31st March 2004. Euro prices will be subject to the prevailing exchange rate at the time of purchase. These figures are for information purposes only.

| | S60 R |
|---|-------|
| SAFETY & SECURITY | |
| Dual Stage Driver and Passenger Airbags | • |
| SIPS (Side Impact Protection System) | • |
| SIPS Airbags | • |
| IC (Inflatable Curtain) | • |
| WHIPS (Whiplash Protection System) (Front Seats) | • |
| ABS (Anti-lock Brakes) with EBD (Electronic Brake Distribution) | • |
| Aluminium 4 Piston Brembo Brake Callipers with R Logo | • |
| DSTC (Dynamic Stability and Traction Control) with Electronic Brake Assistance | • |
| Speed Dependent Steering System | • |
| 5 Three Point Seat Belts | • |
| Seat Belt Pre-tensioners (Front and Rear) | • |
| Head Restraints – All 5 Seats | • |
| ISOFIX Child Seat Preparation | • |
| Anti-theft Alarm including Immobiliser and Panic Function | • |
| Key Integrated Remote Control (R Logo) Central Locking including Fuel Flap with Deadlocking System | • |
| Mass Movement Sensor | • |
| Water Repellent Door Mirror Glass | • |
| Day Running Lights | • |
| Headlamp Levelling System | • |
| High Level LED Brake Light | • |
| Side Marker Bumper Illumination | • |
| Home Safe and Approach Lighting | • |
| INTERIOR | |
| ECC (Electronic Climate Control) with AQS (Air Quality System) and Pollen Filter | • |
| B Pillar Ventilation | • |
| Exterior Temperature Gauge | • |
| Information Centre | • |
| Cruise Control | • |
| Front and Rear Electric Windows | • |
| Electrically Adjustable and Heated Door Mirrors | • |
| Electric Folding Door Mirrors with Ground Lights | • |
| Electric Folding Rear Headrests | • |
| Illuminated Driver and Passenger Vanity Mirrors | • |
| Front and Rear Reading Lamps | • |
| Autodimming Rear View Mirror | • |
| Cupholder in Dashboard ⁽ⁱ⁾ , Two Cupholders in Tunnel Console | • |
| 12v Socket (Rear of Tunnel Console) | • |
| Electric Driver's Seat (with Memory) and Door Mirror Memory | • |
| Height Adjustable Passenger Seat | • |
| Forward Folding Front Passenger Seat | • |
| Asymmetric Split-folding Rear Seat | • |
| Heated Front Seats | • |
| Front Centre Armrest | • |
| R Leather Steering Wheel, Instrument Binnacle, Door Grab Handles, Gear Knob and Handbrake Lever with Blue Stitching | • |
| Steering Wheel Remote Audio Controls | • |
| Height and Reach Adjustable Steering Column | • |
| Illuminated Ignition Lock | • |
| Space Ball Gear Knob – Manual only | • |
| Blue/Silver Chronograph Instrument Dials | • |
| Brushed Aluminium Trim | • |
| R Sports Seats with Metallic Soft Leather Upholstery | • |
| High Performance Sound Audio System HU-850 RDS 6 x CD Radio with Dolby Pro Logic II Surround Sound ⁽ⁱⁱⁱ⁾ with 4 x 50W Amplifier and 9 Speakers | • |
| Electronic Accessory Preparation | • |
| Luxury Colour Co-ordinated Floor Mats | • |
| EXTERIOR | |
| 17" Pegasus Alloy Wheels – 235/45Y Pirelli P-Zero Rosso Tyres | • |
| Locking Wheel Nuts | • |
| Tempa Spare Wheel | • |
| Projector Type Front Fog Lights | • |
| Bi-Xenon Headlamps (Matt Silver Bezel) with Headlamp Wash/Wipe | • |
| Rear Spoiler | • |
| Rain Sensor – Automatic Windscreen Wiper Activation | • |
| Active Four-C (Continuously Controlled Chassis Concept) | • |
| Electronic All Wheel Drive System (Haldex Coupling) | • |
| Towbar Preparation | • |
| Stainless Steel Door Sills with R Logo | • |
| Unique Black Grille with Matt Silver Surround and R Logo | • |
| Unique Front Design – Fully Integrated Spoiler, Large Lower Air Intake, Split Front Rubbing Strip | • |
| Twin Tailpipes and Surround | • |



| | Basic £ | VAT £ | Rec Retail Price £ | Rec Retail Price € ⁽ⁱ⁾ | S60 R |
|--|-----------|---------|--------------------|-----------------------------------|-------|
| SAFETY & SECURITY | | | | | |
| Passenger Airbag Cut Off Switch | £21.28 | £6.72 | £25.00 | €37.40 | o |
| Water Repellent Laminated Side Windows | £331.91 | £58.09 | £390.00 | €583.44 | o |
| Inclination Sensor | £106.38 | £18.62 | £125.00 | €187.00 | o |
| ISOFIX Attachment (Rear Seats) | £23.83 | £4.17 | £28.00 | €41.89 | o |
| Integrated Child Seat (Rear Centre Armrest) ^(iv) | £110.64 | £19.36 | £130.00 | €194.48 | o |
| INTERIOR | | | | | |
| Geartronic Transmission (5 speed) | £1,063.83 | £186.17 | £1,250.00 | €1,870.00 | o |
| Electric Glass Tilt & Slide Sunroof | £723.40 | £126.60 | £850.00 | €1,271.60 | o |
| Sun Curtain (Rear Shelf – Manual) | £85.11 | £14.89 | £100.00 | €149.60 | o |
| Ashtray and Cigarette Lighter | - | - | - | - | nco |
| Rear Cupholders (Armrest) | £29.79 | £5.21 | £35.00 | €52.36 | o |
| Grocery Bag Holder | £85.11 | £14.89 | £100.00 | €149.60 | o |
| Rear Waste Bag/Bottle Holder | £17.02 | £2.98 | £20.00 | €29.92 | o |
| First Aid Kit | £17.02 | £2.98 | £20.00 | €29.92 | o |
| Electric Driver and Passenger Seats (with Driver's Memory) and Door Mirror Memory | £510.64 | £89.36 | £600.00 | €897.60 | o |
| Atacama Natural Leather Upholstery | £1,080.85 | £189.15 | £1,270.00 | €1,854.20 | o |
| Premium Sound Audio System HU-850 RDS 6 x CD Radio with Dolby Pro Logic II Surround Sound ⁽ⁱⁱⁱ⁾ , 4 x 75W Amplifier and 13 Speakers | £212.77 | £37.23 | £250.00 | €374.00 | o |
| Preparation for Accessory 10 x CD Changer and Digital Jukebox | £29.79 | £5.21 | £35.00 | €52.36 | o |
| RTI Navigation System, Remote Control with Europe DVD Map without TV | £1,872.34 | £327.66 | £2,200.00 | €3,291.20 | o |
| RTI Navigation System, Remote Control with Europe DVD Map and TV | £2,297.87 | £402.13 | £2,700.00 | €4,039.20 | o |
| Dual Band Integrated GSM Telephone ^(v) | £595.74 | £104.26 | £700.00 | €1,047.20 | o |
| EXTERIOR | | | | | |
| Metallic/Pearlescent Paint | £425.53 | £74.47 | £500.00 | €748.00 | o |
| 18" Pegasus Alloy Wheels – 235/40Y Pirelli P-Zero Rosso Tyres | - | - | - | - | nco |
| 18" Pegasus Alloy Wheels (Graphite) – 235/40Y Pirelli P-Zero Rosso Tyres | - | - | - | - | nco |
| Rear Park Assist | £289.36 | £50.64 | £340.00 | €508.64 | o |



17" Pegasus



18" Pegasus



18" Pegasus (Graphite)

| | Basic £ | VAT £ | Rec Retail Price £ | Rec Retail Price € ⁽ⁱ⁾ | S60 R |
|---|-----------|---------|--------------------|-----------------------------------|-------|
| FAMILY PACK^(iv) | | | | | |
| Integrated Child Seat (Rear Centre Armrest) and Sun Curtain (Rear, Shelf, Manual) | £148.94 | £26.06 | £175.00 | €261.80 | o |
| COMMUNICATIONS PACK 1 | | | | | |
| Volvo On Call ^(v) , Dual Band Integrated GSM Telephone ⁽ⁱⁱ⁾ , RTI Navigation System with Remote Control and Europe DVD Map | £2,255.32 | £394.68 | £2,650.00 | €3,964.44 | o |
| COMMUNICATIONS PACK 2 | | | | | |
| Volvo On Call ^(v) , Dual Band Integrated GSM Telephone ⁽ⁱⁱ⁾ , RTI Navigation System, Remote Control with Europe DVD Map and TV. | £2,553.19 | £446.81 | £3,000.00 | €4,488.00 | o |

o = optional

n/a = not available

nco = no cost option i.e. a customer can upgrade to that option without paying any extra money.

u = upgrade i.e. a customer can upgrade to that option but will pay the difference in price, upgrade price shown in (£).

(i) Euro prices shown are calculated using an exchange rate of 1.496 Euros to the £, as published in the Financial Times on 31st March 2004.

Euro prices will be subject to the prevailing exchange rate at the time of purchase. These figures are for information purposes only.

(ii) Cupholder in Dashboard is removed when Dual Band Integrated GSM Telephone is ordered.

(iii) Dolby and Pro Logic II Surround Sound[™] are trademarks of Dolby Laboratories Licensing Corporation.

(iv) Cannot be ordered in conjunction with Atacama Natural Leather Upholstery.

(v) Volvo On Call includes: Start Up Fee, 1 year's Free Subscription, 1 x SOS Emergency Call, 1 x Breakdown Call and 25 Free Minutes.

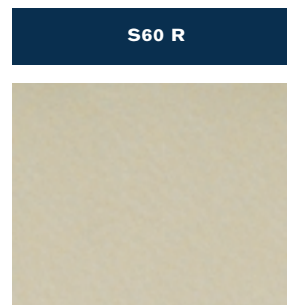
| ACCESSORIES | Basic £ | VAT £ | Rec Retail Price £ | Rec Retail Price € ⁽ⁱ⁾ |
|---|-----------|---------------------|--------------------|-----------------------------------|
| EXTERIOR ACCESSORIES (PRICES EXCLUDE FITTING UNLESS SHOWN OTHERWISE) | | | | |
| Bike Rack (down tube clamp) | £51.06 | £8.94 | £60.00 | €89.76 |
| Bike Rack (servo lift) | £80.85 | £14.15 | £95.00 | €142.12 |
| Bumper Protector | £42.55 | £7.45 | £50.00 | €74.80 |
| Load Basket | £85.11 | £14.89 | £100.00 | €149.60 |
| Load Carrier | £68.09 | £11.92 | £80.00 | €119.68 |
| Roofbox – Sport Time 50 (310 litre volume) | £187.23 | £32.77 | £220.00 | €329.12 |
| Roofbox – Weekender (370 litre volume) | £212.77 | £37.23 | £250.00 | €358.25 |
| Roofbox – Dynamic 65 (405 litre volume) | £229.79 | £40.21 | £270.00 | €374.00 |
| Roofbox – Sport Time 20 (450 litre volume) | £263.83 | £46.17 | £310.00 | €463.76 |
| Roofbox – Dynamic 85 (510 litre volume) | £297.87 | £52.13 | £350.00 | €523.60 |
| Ski/Snowboard Carrier with Slide Rail | £59.58 | £10.42 | £70.00 | €104.72 |
| Towbar – Detachable Type with 7 Pin Electrics ⁽ⁱⁱ⁾ | £350.29 | £61.30 | £411.59 | €615.74 |
| Towbar – Detachable Type with 13 Pin Electrics ⁽ⁱⁱ⁾ | £404.70 | £70.82 | £475.52 | €711.37 |
| INTERIOR | | | | |
| Boot Mat – rubber | £72.34 | £12.66 | £85.00 | €121.81 |
| Boot Mat – textile/rubber reversible | £76.60 | £13.40 | £90.00 | €127.16 |
| Cooler/Hot Box (excludes price for power cable) | £68.09 | £11.92 | £80.00 | €119.68 |
| Fire Extinguisher (excludes installation kit) | £21.28 | £3.72 | £25.00 | €37.40 |
| First Aid Kit | £17.02 | £2.98 | £20.00 | €29.92 |
| Handsfree Phone System ⁽ⁱⁱⁱ⁾ | | Available late 2004 | | |
| Handsfree Phone System (inc. Audio Mute Function) ⁽ⁱⁱⁱ⁾ | | Available late 2004 | | |
| Load Securing Straps (cargo area) | £17.02 | £2.98 | £20.00 | €29.92 |
| Load Securing Net (cargo area) | £59.58 | £10.43 | £70.00 | €104.72 |
| Net Pocket (cargo area) | £25.53 | £4.47 | £30.00 | €44.88 |
| Padded Neck Cushion | £17.02 | £2.98 | £20.00 | €29.92 |
| PC table for laptop computers | £59.58 | £10.43 | £70.00 | €104.72 |
| RSE (Rear Seat Entertainment) (2 x 6" Screens in Headrest) ⁽ⁱⁱⁱ⁾ | £2,127.66 | £372.34 | £2,500.00 | €3,740.00 |
| Rubber Floor Mats (set of four) | £63.83 | £11.17 | £75.00 | €112.20 |
| Sunblind – rear window | £51.06 | £8.94 | £60.00 | €89.76 |
| Sunblind – rear door windows (pair) | £51.06 | £8.94 | £60.00 | €89.76 |
| Table – rear centre arm rest | £17.02 | £2.98 | £20.00 | €29.92 |
| CHILD ACCESSORIES | | | | |
| Child Booster Cushion | £29.79 | £5.21 | £35.00 | €52.36 |
| Child Booster Backrest (to go with above) | £29.79 | £5.21 | £35.00 | €52.36 |
| Padded Upholstery – for booster seat and headrest | £51.06 | £8.94 | £60.00 | €89.76 |

(i) Euro prices shown are calculated using an exchange rate of 1.496 Euros to the £ as published in the Financial Times on 31st March 2004. Euro prices will be subject to the prevailing exchange rate at the time of purchase. These figures are for information purposes only.
(ii) Indicates total fitted price post registration. At participating dealers only. To find out who is a participating dealer contact the Volvo Helpline on 0800 400 430.
(iii) Denotes the colour of the door panels above the Inlay Trim.

For further information and a complete list of all Volvo Accessories, just take a look at the new Accessory website at www.volvocars.co.uk/accessories.

| UPHOLSTERY | Upholstery Code | Upholstery Colour | Dashboard Top/ Door Panel Colour ⁽ⁱⁱⁱ⁾ | Door Insert Colour | Headliner Colour |
|-------------------------|-----------------|----------------------|---|----------------------|------------------|
| Gobi Soft Leather | 9577 | Beige/Gold Metallic | Charcoal | Beige/Gold Metallic | Granite |
| Nordkap Soft Leather | 9576 | Blue/Silver Metallic | Charcoal | Blue/Silver Metallic | Granite |
| Atacama Natural Leather | 9675 | Natural Leather | Charcoal | Natural Leather | Granite |

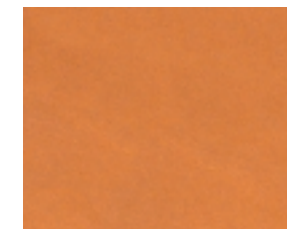
UPHOLSTERY



Gobi Soft Leather (9577)

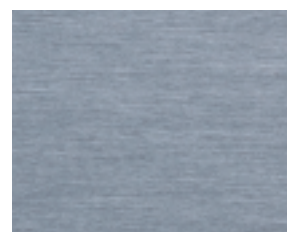


Nordkap Soft Leather (9576)



Atacama Natural Leather (9675)

INTERIOR INLAY

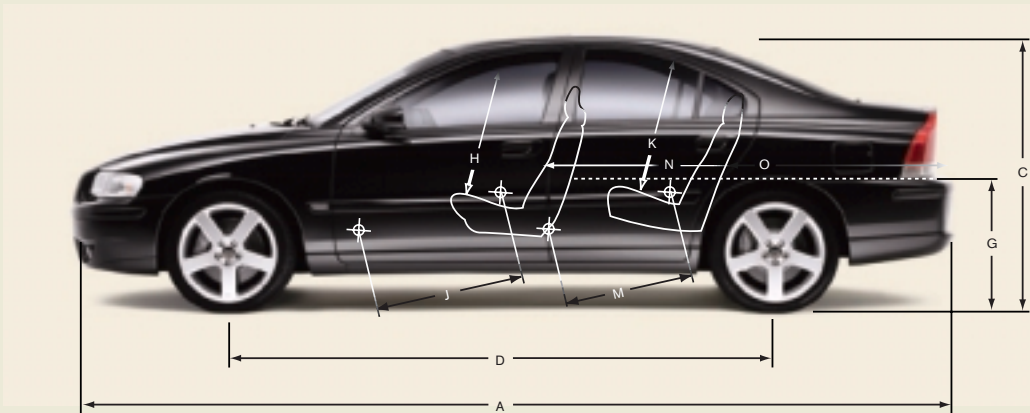


Brushed Aluminium



NB It is not possible to reproduce exact original shades in printed matter.

| ENGINE | Manual | Geartronic |
|-----------------------------|-----------------------------------|-----------------------------------|
| Configuration | Transverse – 20 valve | Transverse – 20 valve |
| Cylinders | 5 | 5 |
| Engine capacity, cc | 2521 | 2521 |
| Bore x stroke, mm | 83 x 93 | 83 x 93 |
| Max. output ECE, bhp/kw/rpm | 300/220/5500 | 300/220/6000 |
| Max. torque ECE, Nm/rpm | 400/1950-5250 | 350/1850-6000 |
| Octane rating | 95-98 RON ⁽ⁱ⁾ unleaded | 95-98 RON ⁽ⁱ⁾ unleaded |
| Fuel system | Multipoint fuel injection | Multipoint fuel injection |
| Compression ratio | 8.5:1 | 8.5:1 |



| PERFORMANCE | Manual | Geartronic |
|----------------------------|--------|------------|
| Top speed, mph | 155 | 155 |
| Acceleration 0-62 mph, sec | 5.7 | 7.5 |
| Drag co-efficient | 0.29 | 0.29 |

| FUEL CONSUMPTION ⁽ⁱⁱ⁾ | Manual | Geartronic |
|---|-------------|-------------|
| (Government Approved) Mpg (l/100 km) ⁽ⁱⁱⁱ⁾ | | |
| Urban | 19.5 (14.5) | 17.8 (15.9) |
| Extra Urban | 34.4 (8.2) | 34.9 (8.1) |
| Combined | 26.9 (10.5) | 25.9 (10.9) |
| CO ₂ g/km | 252 | 261 |
| VED (Vehicle Excise Duty) Band | D | D |
| Fuel tank volume, litres (gallons) | 68 (15.0) | 68 (15.0) |

| INSURANCE GROUPS | |
|------------------|------|
| Volvo S60 R | 18 A |

A = Meets security requirements and group rating unaffected.

| WEIGHTS | |
|--|------|
| Min. kerb weight, kg (actual kerb weight dependent on spec) | 1653 |
| Max. possible towing weight braked, kg | 1600 |
| Max. towing weight unbraked approx, kg ^(iv) | 750 |
| Max. total weight, kg | 2110 |
| Max. roof load, kg | 100 |
| Max. payload, kg (dependent on spec) | 457 |

| EXTERIOR (mm) | | INTERIOR (mm) | |
|-------------------------------------|------|---|------|
| A Overall length | 4606 | H Front seat max. headroom ^(v) | 984 |
| B Overall width (exc. wing mirrors) | 1813 | I Front seats width | 1427 |
| C Unladen height | 1431 | J Front seat max. legroom | 1082 |
| D Wheelbase length | 2715 | K Rear seat max. headroom ^(v) | 962 |
| E Front track width | 1557 | L Rear seats width | 1409 |
| F Rear track width | 1542 | M Rear seat max. legroom | 847 |
| G Rear Load Height | 511 | N Load length luggage 2 seat mode | 1661 |
| | | O Load length luggage 5 seat mode | 824 |



| TRANSMISSION | |
|--------------|---------|
| Manual | 6 speed |
| Geartronic | 5 speed |

| BRAKES | |
|-------------------------|-----|
| Disc diameter mm, front | 330 |
| Disc diameter mm, rear | 330 |

| TYRES | |
|--|--|
| 17" Pegasus Alloy Wheels – 235/45Y Pirelli P-Zero Rosso | |
| 18" Pegasus Alloy Wheels – 235/40Y Pirelli P-Zero Rosso | |
| 18" Pegasus Alloy Wheels (Graphite) – 235/40Y Pirelli P-Zero Rosso | |

| POWER STEERING SYSTEM | |
|------------------------|-------------|
| (rack & pinion) | |
| Turning Circle, m (ft) | 13.0 (42.7) |

| LUGGAGE COMPARTMENT | |
|--|------------|
| Volume, litres (cu. ft) | 394 (13.9) |
| Volume, rear seats down, litres (cu. ft) | 808 (28.5) |

- (i) For best performance and lowest fuel consumption 98 RON is recommended. 95 RON can be used for normal driving.
- (ii) These results do not express or imply any guarantee of the fuel consumption of a particular car as there are inevitable differences between individual cars of the same model. Additionally driving style, traffic conditions, as well as the age and mileage and standard of maintenance will affect a car's fuel consumption.
- (iii) The Urban fuel consumption figure is based on typical city driving, including starting the car from cold. The Extra Urban figure is based on typical motorway driving and cruising. The Combined figure averages the consumption across both cycles.
- (iv) Unbraked towing weight must not exceed 50% of kerb weight up to a maximum of 750 kg.
- (v) Figure quoted without sunroof.

Notes

The weight of the vehicle will influence the level of CO₂ emitted. As a result, vehicles with higher levels of specification and factory fit options may emit higher levels of CO₂. Once a vehicle has been built it will be given its own specific CO₂ emission on which Vehicle Excise Duty will be charged.

A weighbridge must be used to determine specific weights.

Data valid for manual transmission unless specified.

All measurements in mm.

Some of the information in this price list may not be correct due to product changes which may have occurred since it was printed. Some of the equipment described or shown may now be available at extra cost. Before ordering, please ask your Volvo dealer for the latest information. The manufacturer reserves the right to make changes at any time, without notice, to price, colour, materials, specifications and models.

Volvo Car UK Limited, Globe Park, Marlow, Buckinghamshire, SL7 1YQ.



426 Silver metallic



457 Flash Green pearl



452 Black Sapphire metallic



467 Magic Blue pearl



455 Titanium Grey metallic



612 Passion Red



CARE
BY VOLVO

IT'S SIMPLICITY ITSELF. ONE POINT OF CONTACT FOR ALL YOUR CAR OWNERSHIP NEEDS. WHETHER IT'S ABOUT FINDING THE RIGHT FINANCE DEAL OR WHO TO CONTACT IN AN EMERGENCY. TRUST CARE BY VOLVO TO ENJOY A VERY SPECIAL CAR OWNERSHIP.

STARTING OFF ON THE RIGHT FOOT
You'll be surprised how easy and flexible financing can be. Our range of finance, service and insurance options allow you to budget around one key factor - your lifestyle.

MAKING LIFE EASIER
Owning a Volvo is all about discovering the safest, most exciting, driving experience. To ensure it always stays that way, we're committed to providing you with the best in aftersales support.

LOOKING AHEAD
You'll probably never find out just how good some of our services are, but should the unexpected happen you'll discover yet more reasons why buying a Volvo was the right choice.

FINANCE/LEASE

As part of Volvo, Volvo Car Finance has developed a series of finance plans that will provide you with maximum choice and flexibility when acquiring a Volvo.

SERVICE PROGRAMME

Your Volvo dealer has the unique know-how to tailor a service programme according to Volvo's strict recommendations and guarantees you years of safety and driving pleasure.

ROADSIDE ASSISTANCE

Every new car comes with one year's free RAC cover. You'll enjoy full breakdown and recovery assistance, anywhere in Europe, 24 hours a day. You can even extend cover for up to two more years at preferential rates.

INSURANCE

Statistics show Volvo drivers have fewer accidents. That means Volvo Owners Insurance can offer competitive premiums with tailored protection and exclusive benefits. Operated in partnership with The Royal & SunAlliance, one telephone call even deals with all arrangements for any claim. Call direct on 0800 238 239 to obtain a free no obligation quote⁽ⁱ⁾.

WARRANTY

Every new Volvo comes with comprehensive protection. Our warranty covers the first three years or 60,000 miles, whichever comes first. There's a three year unlimited warranty on the paintwork, and a full eight years against rust perforation. If a component fails due to a defect or material fault, your dealer will swiftly rectify the problem, free of charge.

All 'On The Road' prices quoted in this price list include Volvo standard national delivery charge, inclusive of number plates, at £480 and the VED (Vehicle Excise Duty) car tax effective from 1st March 2000. The 'On The Road' price also includes a £38 vehicle first registration fee (as set by the government), effective since 1st April 1998 (excludes Channel Islands and Isle of Man). Retail prices quoted do not include these additions.

For tax free sales, including Military, Diplomat and all other Export enquiries, contact Volvo Car UK Ltd (Military, Diplomat and International Customer Sales) on 01707 262388, e-mail to vcuktds@volvocars.com or bms@volvocars.com

WHAT NEXT? If you'd like to find out more about the range of products and services that make up Care by Volvo, the story continues at www.volvocars.co.uk

Alternatively you can contact your nearest Volvo dealer or request relevant brochures.

(i) Volvo Owners Insurance is underwritten by Royal & Sun Alliance Insurance plc No. 93792. Registered in England and Wales at St Mark's Court, Chart Way, Horsham, West Sussex RH12 1XL. Member of the General Insurance Standards Council. For your protection telephone calls will be recorded and may be monitored.

VOLVO

Volvo Car UK Limited
www.volvocars.co.uk