



KEY BLADE

Used to lock/unlock the glovebox or the driver's door lock, e.g. if car is without electrical power.



Locks doors and tailgate and arms the alarm*.

Unlocks the doors^A and tailgate, and disarms the alarm.

Unlocks the tailgate – it does not open.

Switches on lighting for 30 seconds^B in the side mirrors*, in the passenger compartment, at the floor and on the number plate. Indicators and parking lamps illuminate.

"Panic" button. Press and hold for approx. 3 seconds in an emergency to trigger the alarm. Switch off the panic alarm with one long press on the same button or the unlock button

^A Automatic relocking takes place if a door/tailgate is not opened within 2 minutes after unlocking.

^B The time is adjustable to 30, 60 or 90 seconds, see the Owner's Manual

COLD START

NOTE

After a cold start the idling speed is higher irrespective of the outside temperature. Raised idling speed is part of Volvo's efficient emissions system.

AUTOSTART (APPLIES TO 2.4i, T5 AND D5)

Depress the clutch and/or brake pedal. Turn the remote control/ignition dial to end position **III** and release it straight away – the engine starts automatically.

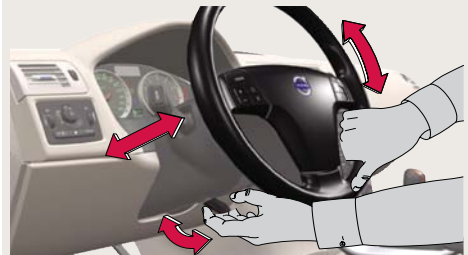
Diesel engines must always be preheated in key position **II** before the engine is started

DIRECTION INDICATORS

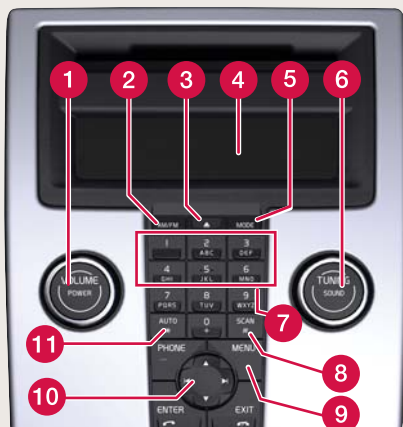


A. Short sequence, **three flashes**.
B. **Continuous** flash sequence.

ADJUSTING THE STEERING WHEEL



WARNING! Adjust the steering wheel before setting off – never while driving.



- 1** On/Off and audio volume. Press for On/Off. Turn to adjust the volume. Radio, TP, handsfree* and RTI* volume are stored individually.
- 2** Radio FM1, FM2 or AM.
- 4** Display
- 5** MODE, CD or AUX^A
- 6** Sound pattern – Press to select Sound pattern e.g. BASS and Dolby Pro Logic II*. Turn to adjust.
- 9** MENU – AUX, volume and advanced audio settings.

RADIO

- 6** Select radio station by turning.
- 8** SCAN – automatic tuning.
- 10** Search for station using Left/Right arrow. Store up to 20 stations by holding in 0–9 on FM1 and 0–9 on FM2. When a station has been stored it is confirmed in the display.
- 11** Autostore stations – Press AUTO for approx. 2 seconds. Autostoring is shown in the display. The 10 strongest stations are stored. Then press 0–9 to select a station.

CD PLAYER

- 3** Ejecting a CD disc. One short press ejects the current disc. One long press ejects all^B.
- 6** Turn – change CD track.
- 7** Direct selection CD disc^B – Press 1–6.
- 10** Change CD track using Left/Right arrow or turn (6). Select CD disc^B using Up/Down arrow.

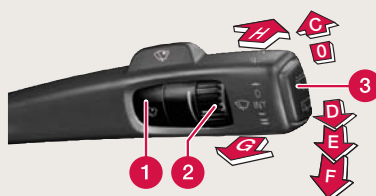
^A AUX input for e.g. MP3 player (set volume at medium for optimum audio reproduction)

^B Only CD changer*

WINDSCREEN WIPERS AND RAIN SENSOR*



- C** Single sweep
- 0** Off
- D** Intermittent wiping. Turn (B) to adjust.
- E** Normal speed
- F** High speed
- G** Windscreen and headlamp washing
- H** Rear window washer
- 3** Rear window wiper intermittent/normal



- 1** Rain sensor On/Off. Position D–F deactivates.
- 2** Adjust sensitivity using the thumb-wheel.
- Display symbol for rain sensor On.



AUTOMATIC CONTROL

In **AUTO** mode the ECC system controls all functions automatically making driving simpler with optimum air quality.

1 Automatic

Press **AUTO** for automatic control of set temperature and other functions.

2 Temperature

Press for individual adjustment of left **L** or right-hand **R** side. **Turn** to required temperature. The set temperature is shown in the display.

MANUAL CONTROL



Fan speed



Air distribution



Defroster to quickly remove misting from the windscreen and side windows.



A – Air quality system* On.

M – Recirculation On.



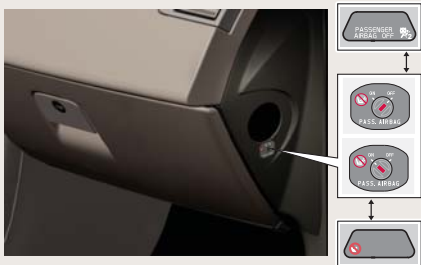
AC Air conditioning On/Off. Cools the passenger compartment and demists the windows.



Rear window and door mirror defrosters. Automatic deactivation^A

^ARear window 12 minutes. Mirrors 6 minutes

PACOS*, DEACTIVATING THE AIRBAG



PACOS (Passenger Airbag Cut Off Switch)

Use the ignition key to switch **ON/OFF**.

OFF: The airbag is deactivated.

PASSENGER AIRBAG OFF is shown in the warning lamp above the interior rearview mirror.

A child can sit on a booster cushion or child seat in the front seat but **never passengers taller than 140 cm.**

ON: The airbag is activated.

Passengers taller than 140 cm can sit in the front seat but **never a child on a booster cushion or child seat.**



WARNING

Incorrect use could endanger life. Consult the Owner's Manual if you have the slightest doubt about its use.



FUEL

1 Low fuel level

When the symbol illuminates - refuel as soon as possible.

2 Fuel gauge.

The arrow indicates that the fuel filler flap is on the right-hand side.

TRIP METERS

3 Switch between T1 & T2 with one short press. Reset the current meter with one long press.

5 Display shows two independent trip meters, T1 & T2.

DISPLAY

4 Shows trip computer, messages, clock and outside temperature.

TRIP COMPUTER



6 Press to clear a message.

7 Turn to show e.g. KILOMETRES TO EMPTY TANK in the display (4).

8 Reset the current function. One long press resets all functions.

! IMPORTANT

"Kilometres to empty tank" is an estimate of possible distance based on earlier driving conditions.

BLIS – BLIND SPOT INFORMATION SYSTEM*



If the BLIS' indicator lamp illuminates despite there being no vehicle within the blind spot, the cause could be for example, reflection from shiny wet road surface, own shadow on light road surface or low sun in the camera.

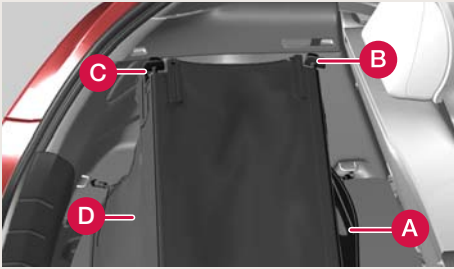
In the event of a direct fault in the system the display shows the text **Blis Service Required**.

DIESEL PARTICLE FILTER



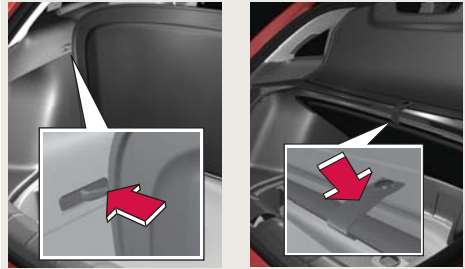
In certain conditions the instrument panel display may show "SOOT FILTER FULL". At which point the exhaust system's particle filter requires cleaning. This takes place automatically by driving for approx. 20 minutes at an even main road speed. When the message clears the so-called regeneration is complete.

CARGO COVER*



1. Secure the hooks at the floor (A).
2. Press together the spring-loaded rail and affix it in the brackets at (B) on both sides.
3. Affix the brackets at (C) in the same way.
4. Secure the hooks at (D).
5. Undo the attachment points (D) and if necessary (C) on both sides during loading.
6. Undo (D), (C), (B) and (A), and roll up the cargo cover when not in use.

HOLDER FOR FLOOR HATCH

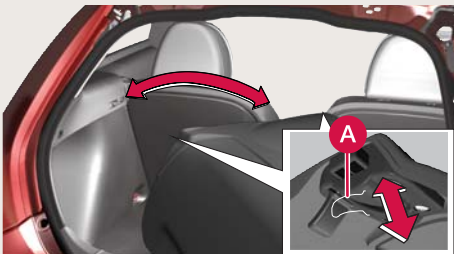


Floor hatch in open position without/with cargo cover.

LOWERING THE BACKREST

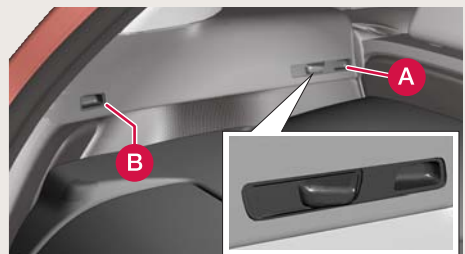


HARD CARGO COVER*



Installation

Pull all four lock buttons backwards to their end positions. Carefully lift in the cargo cover, position the front section on the two supports behind (A) on both sides.



Align one rear lock at (B) and press the lock button forwards. Lock the three remaining ones in the same way.

Removal

Pull all four lock buttons backwards to their end positions – first (A), then (B). Remove the cargo cover.

ADJUSTING THE FRONT SEAT



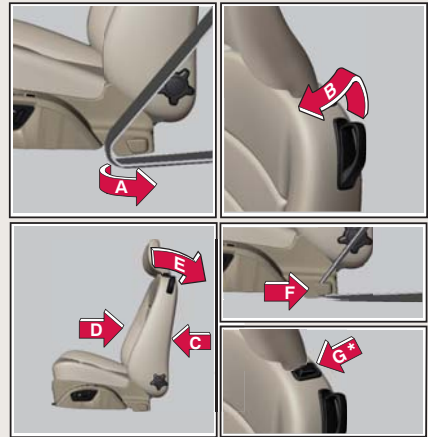
- 1 Lumbar support
- 2 Backrest rake
- 3 Raise/lower seat
- 4 Seat cushion front edge raise/lower
- 5 Forwards/backwards
- 6 Entry to the rear seat

REFUELLING



Hang up the fuel cap during refuelling.

ENTRY TO THE REAR SEAT



Manual seat

Move the seat forward:

- A. Remove the seatbelt from the belt guide.
- B. Pull up the handle, fold the backrest forwards to the locked position.
- C. Move the seat forward.

Move the seat backward:

- D. Move the seat backwards to its original position.
- E. When the seat has reached its original position. Pull up the handle (B), fold back the backrest.
- F. Refit the seatbelt in the belt guide.

Power seat*

Move the seat forward:

- A. Remove the seatbelt from the belt guide
- B. Pull up the handle, fold the backrest forwards.
- G. Hold the button in while the seat moves forwards.

Move the seat backward:

- G. Hold the button in again until the seat has reached its original position. Pull up the handle (B), fold back the backrest.
- F. Refit the seatbelt in the belt guide.

NOTE

When putting on the seatbelt, it is easiest to take it down by the belt guide, and not over the shoulder.